



FLOOR PLAN

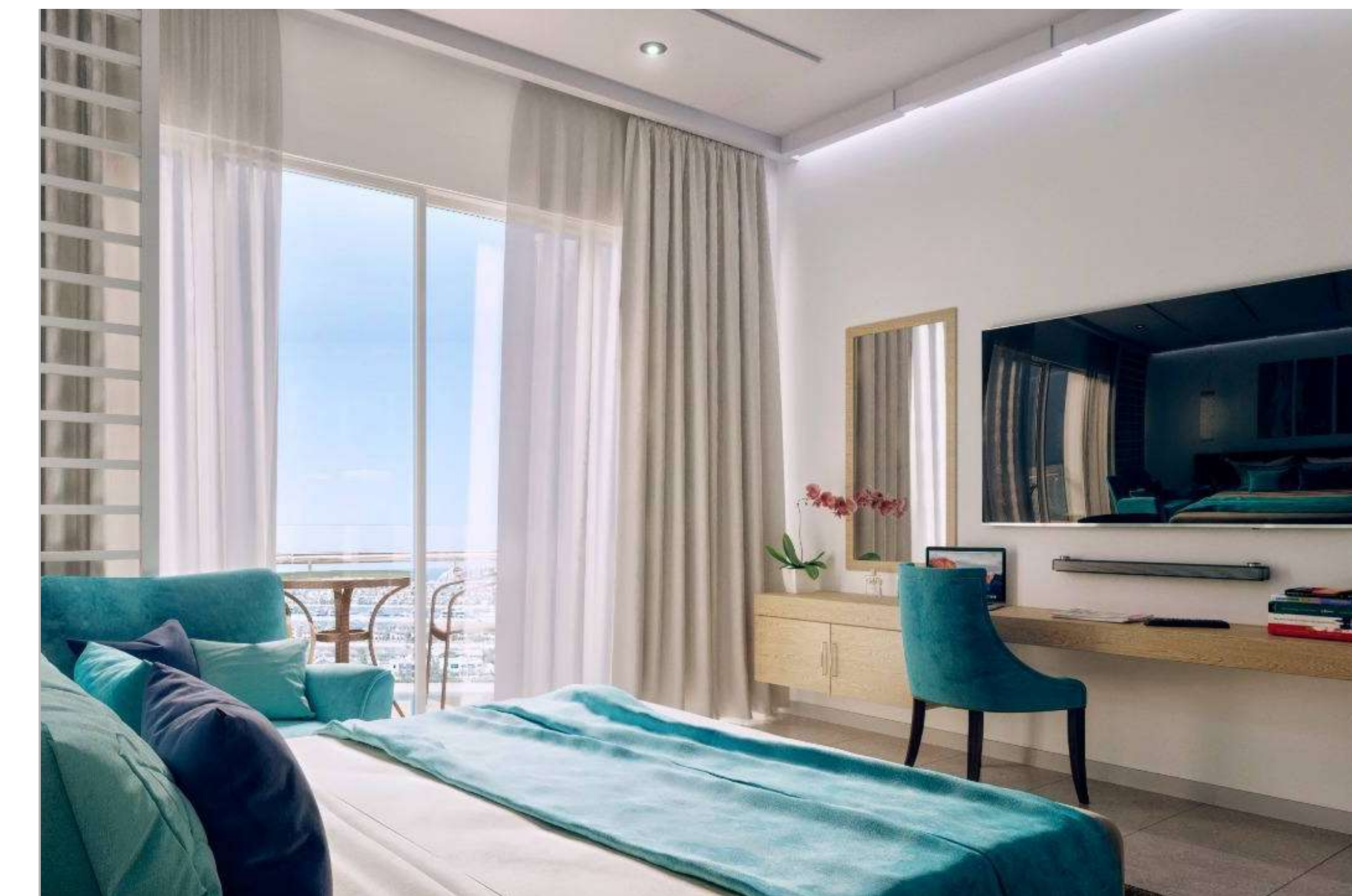




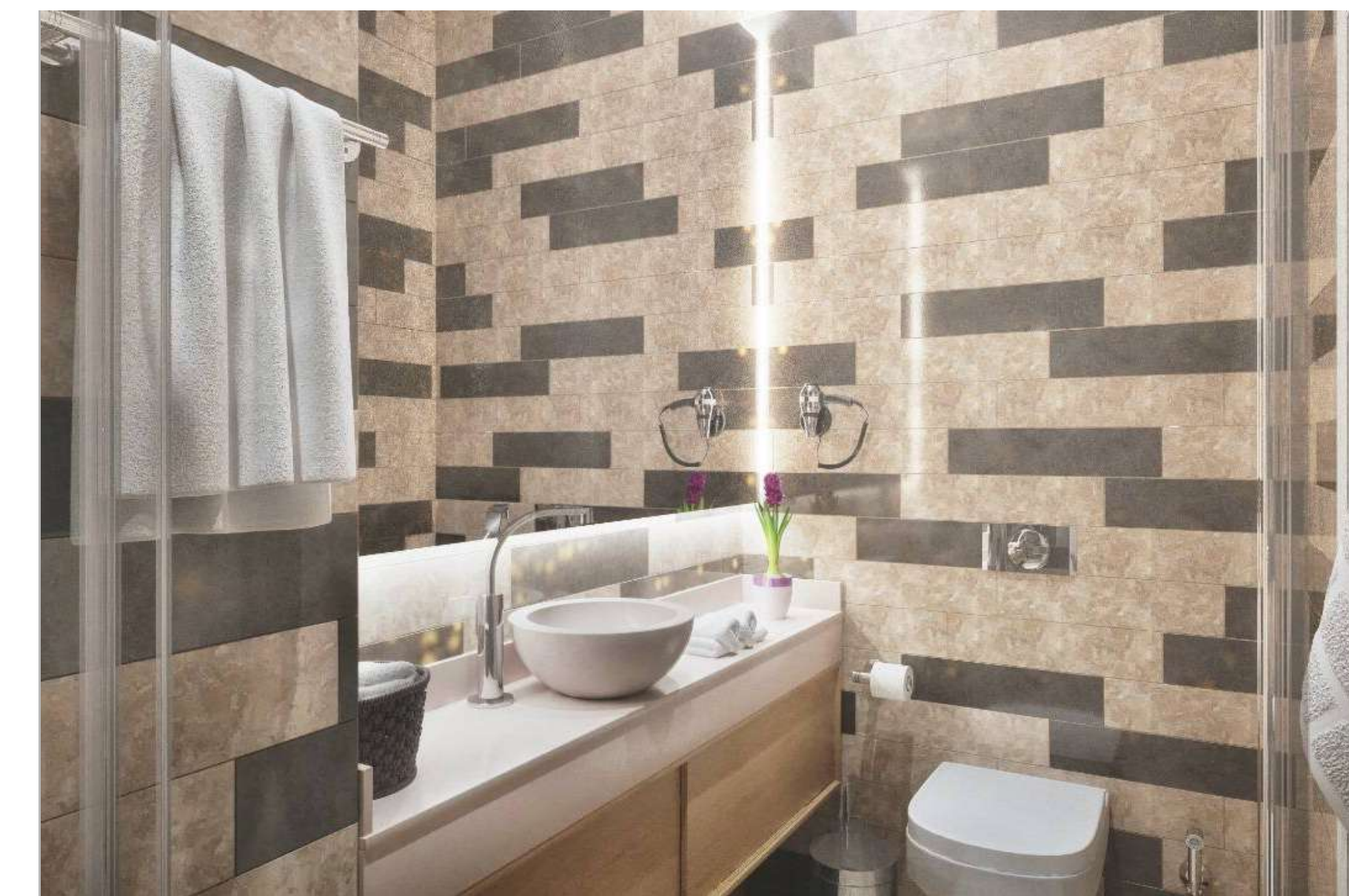


Imagine relaxed living in an exceptional one bedroom apartment featuring high quality furnishings, separate air-conditioning controls, flat screen televisions in the living and master bedroom, guest toilet, en-suite master bedroom, walk-in wardrobes, fully equipped kitchens and spacious balconies with spectacular views.





Studio apartments feature high quality furnishings maximizing space, flat screen televisions, fully equipped kitchens and floor-to-ceiling windows to maximize natural light and spacious balconies with spectacular views.

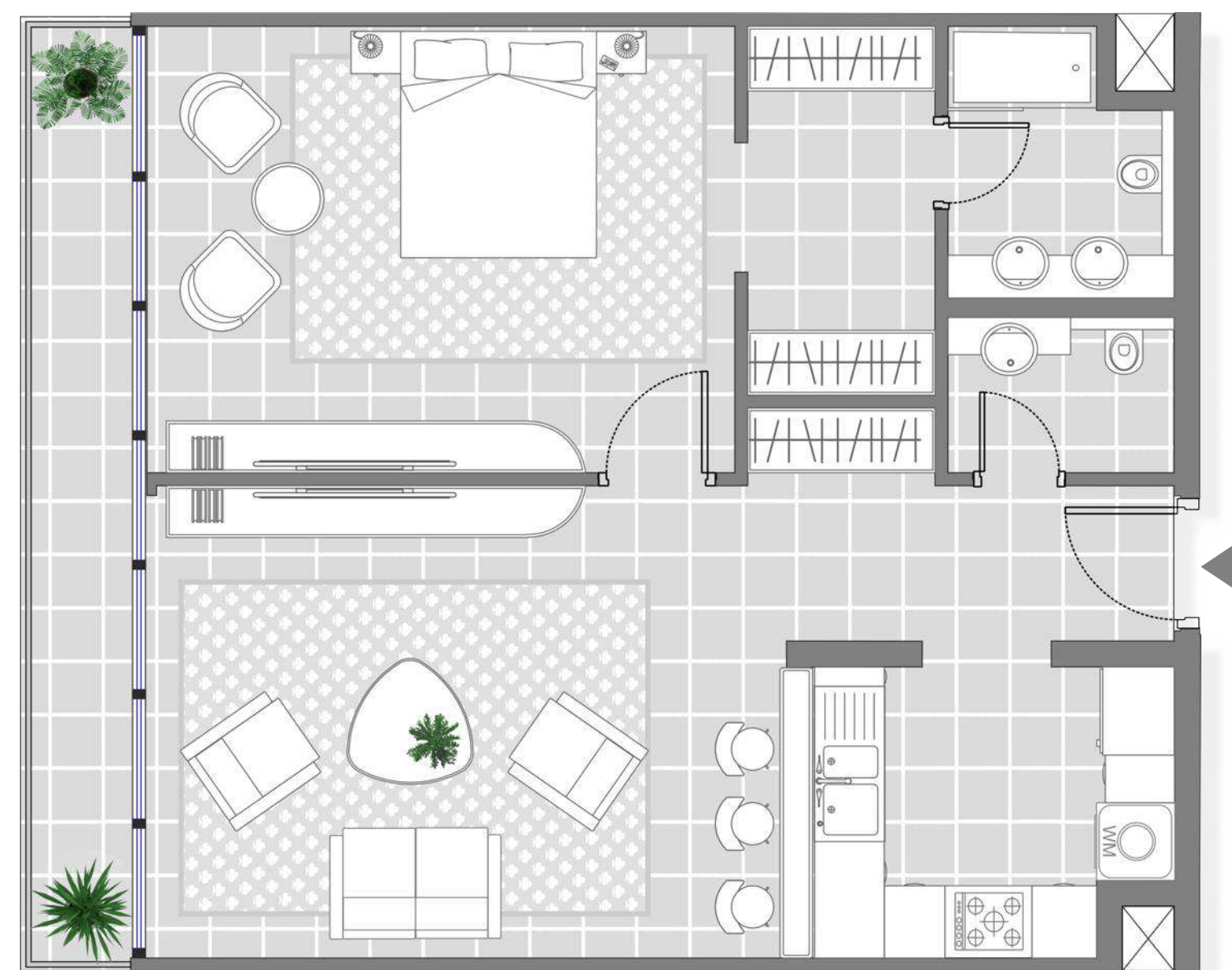


Suite Area: From 308 to 612 SQFT
Balcony Area: From 18 to 100 SQFT
Total Area: From 307 to 713 SQFT



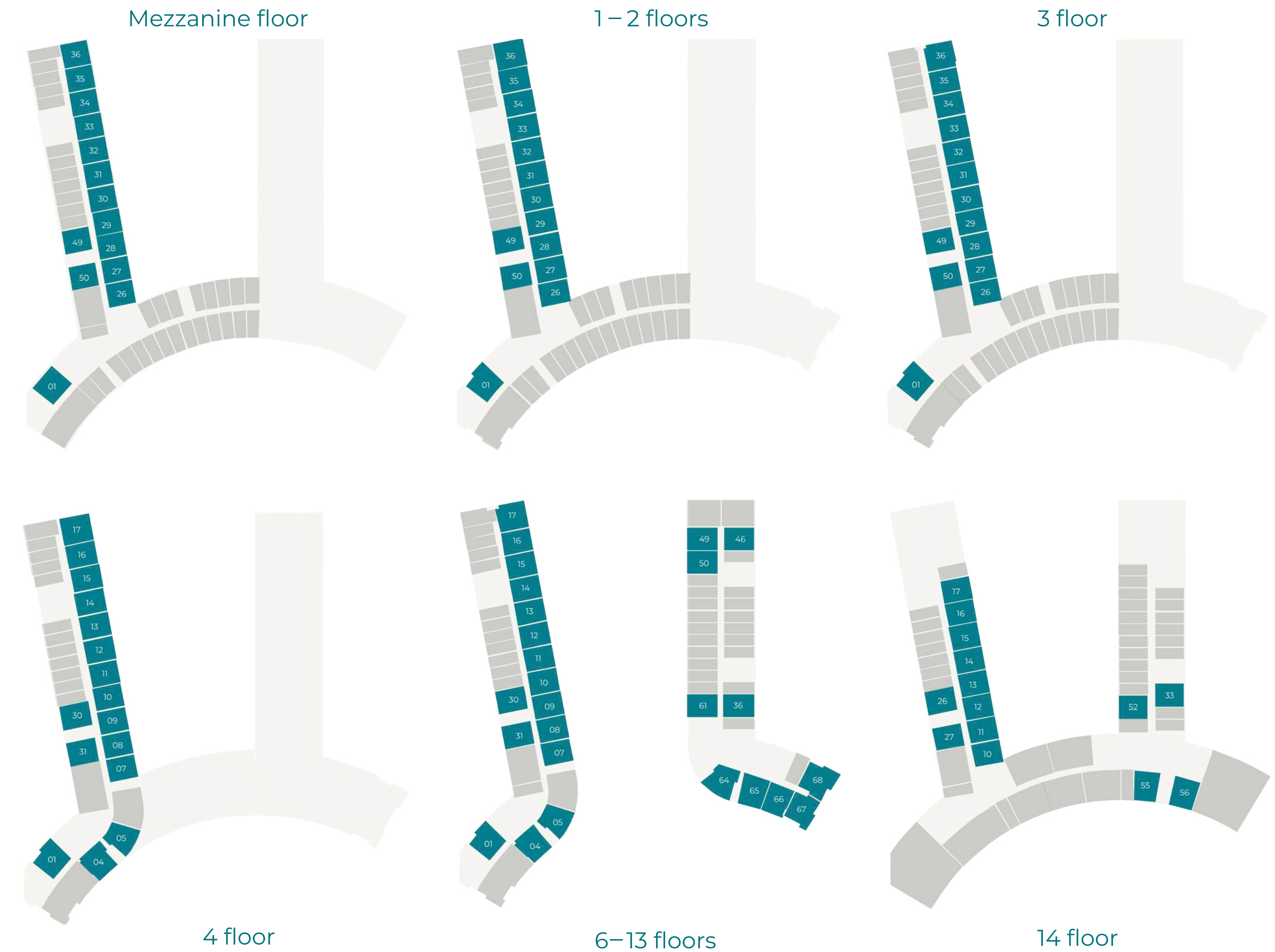
3 floor

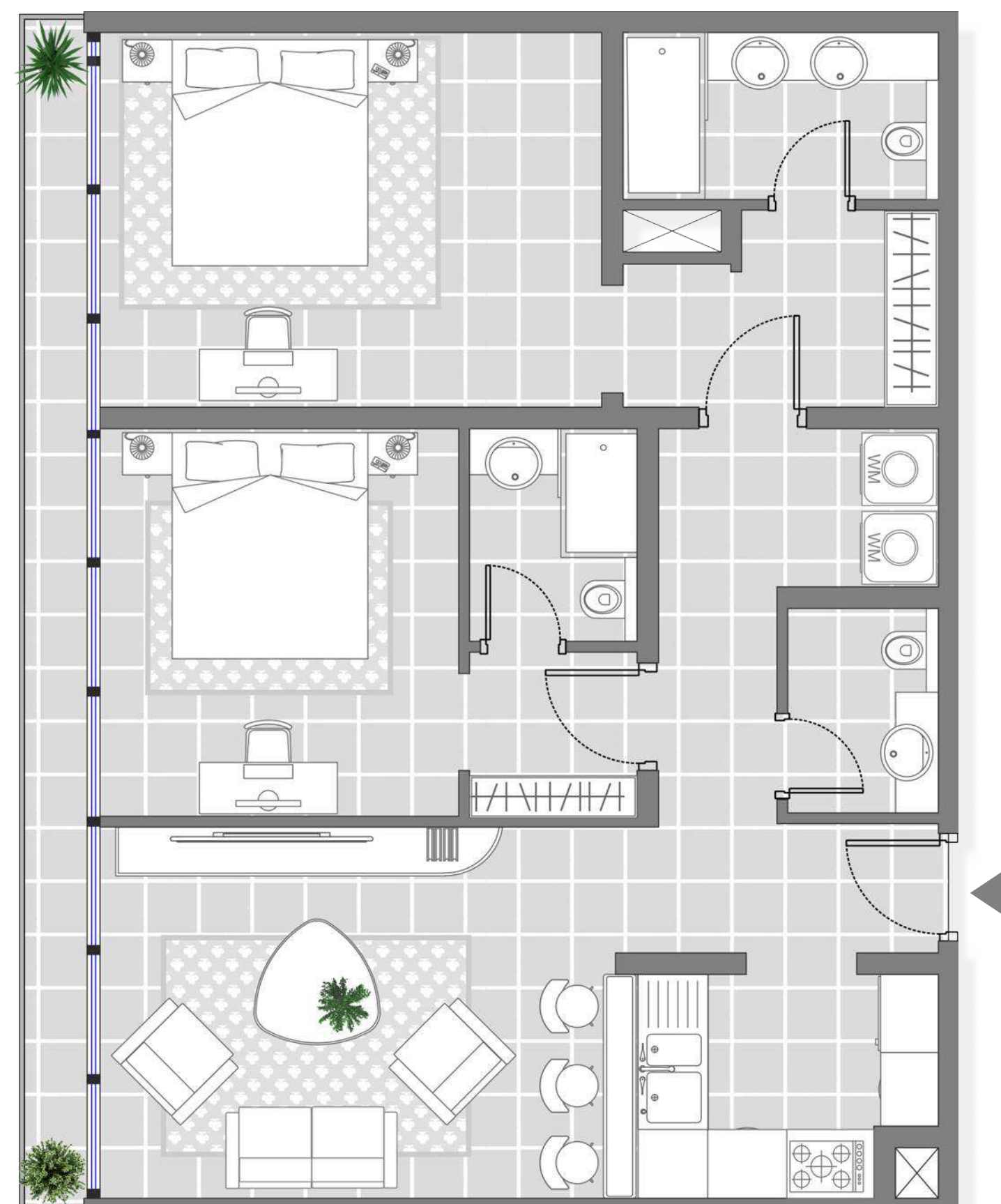




1 BEDROOM APARTMENTS

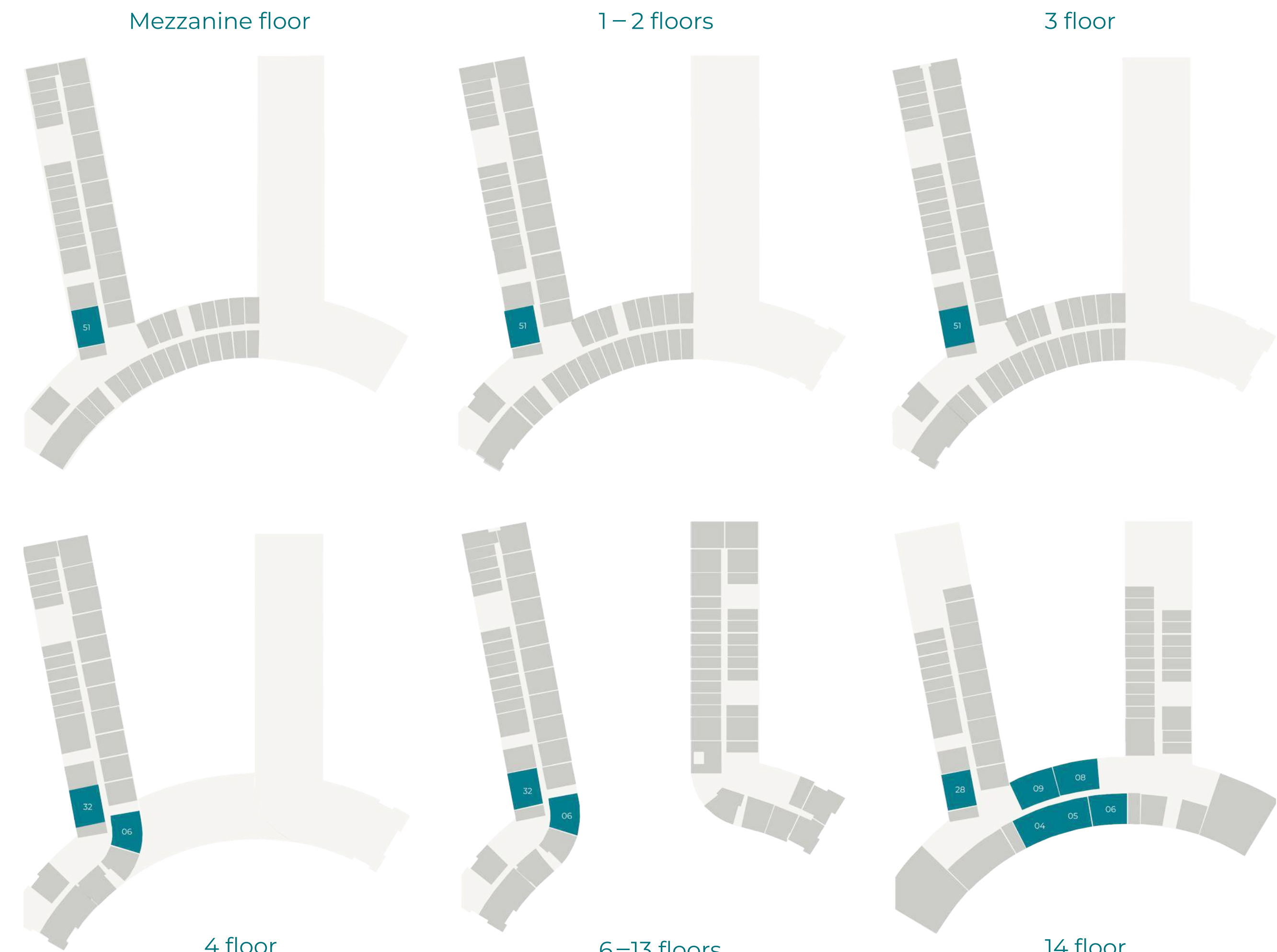
Suite Area: From 560 to 846 SQFT
Balcony Area: From 33 to 174 SQFT
Total Area: From 560 to 946 SQFT

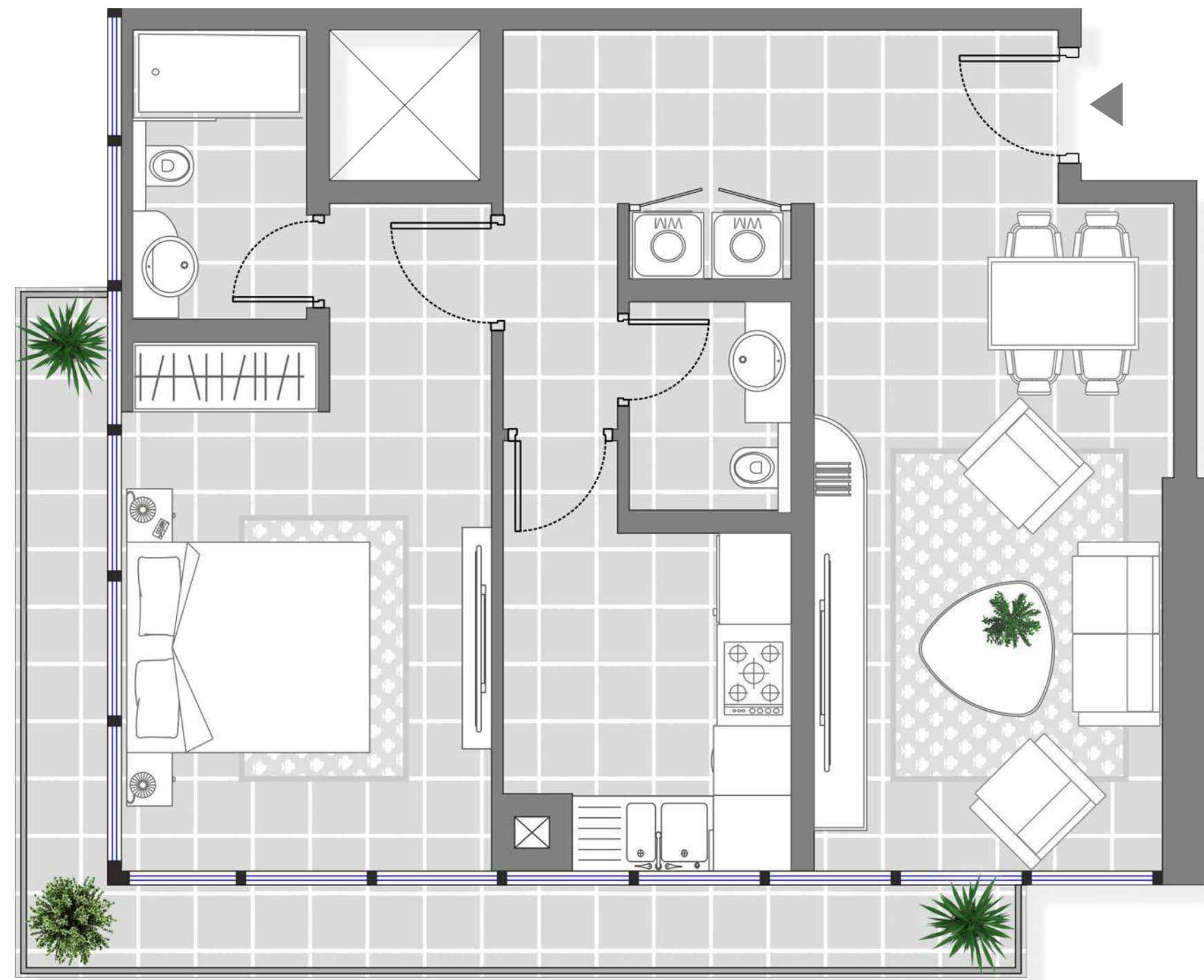




2 BEDROOM APARTMENTS

Suite Area: From 969 to 1080 SQFT
Balcony Area: From 104 to 125 SQFT
Total Area: From 1020 to 1202 SQFT



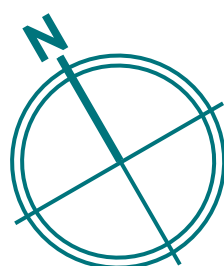


1 BEDROOM APARTMENTS

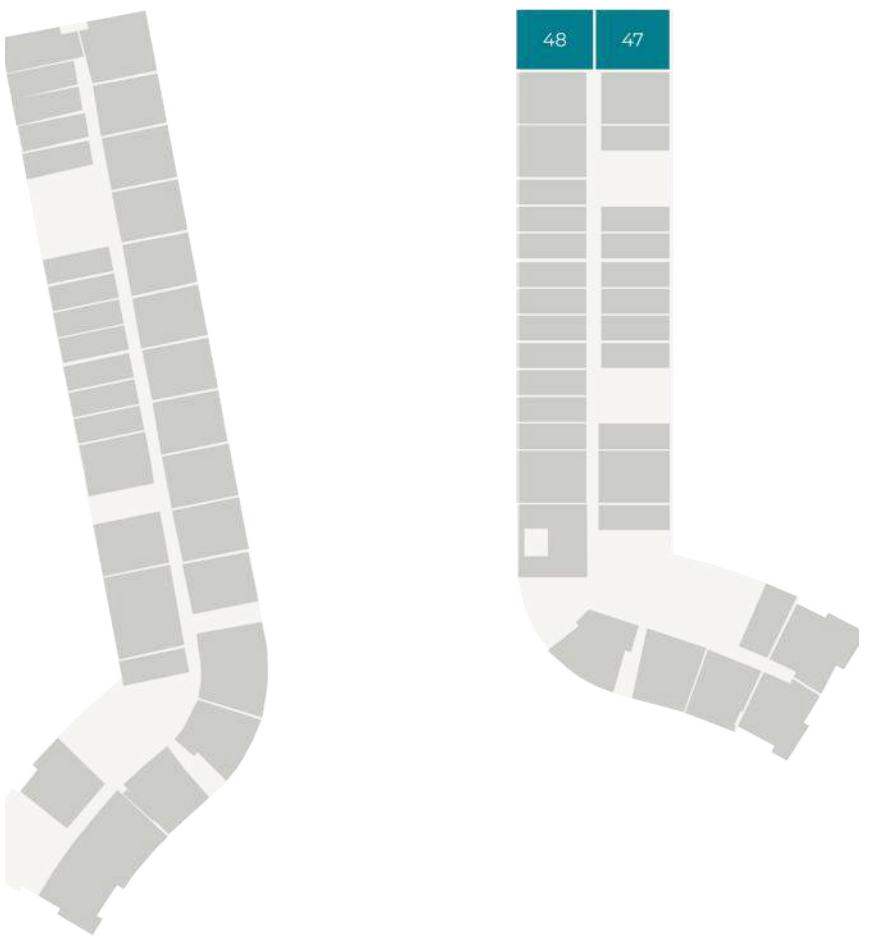
Suite Area: 722 SQFT

Balcony Area: 140 SQFT

Total Area: 862 SQFT

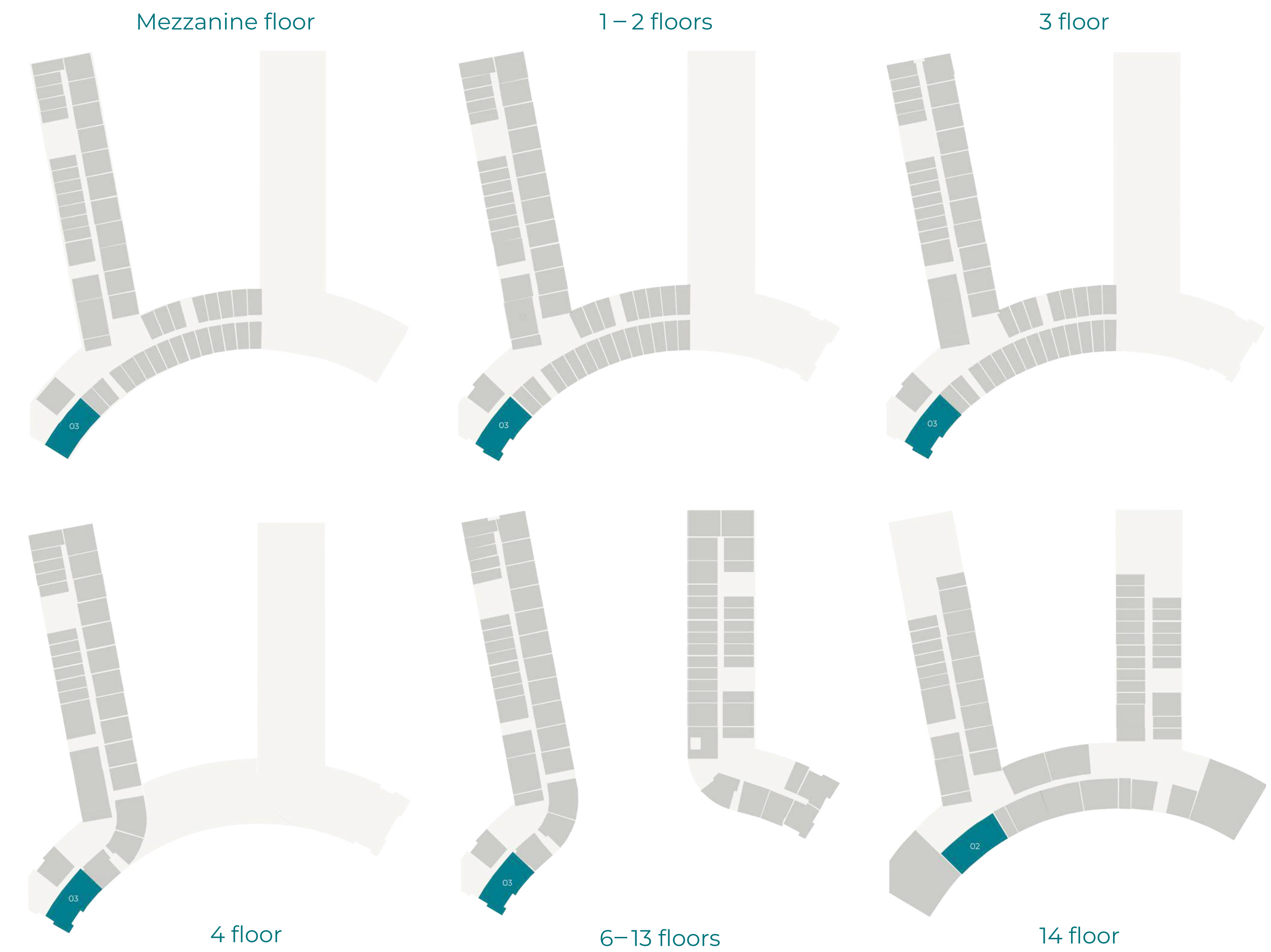


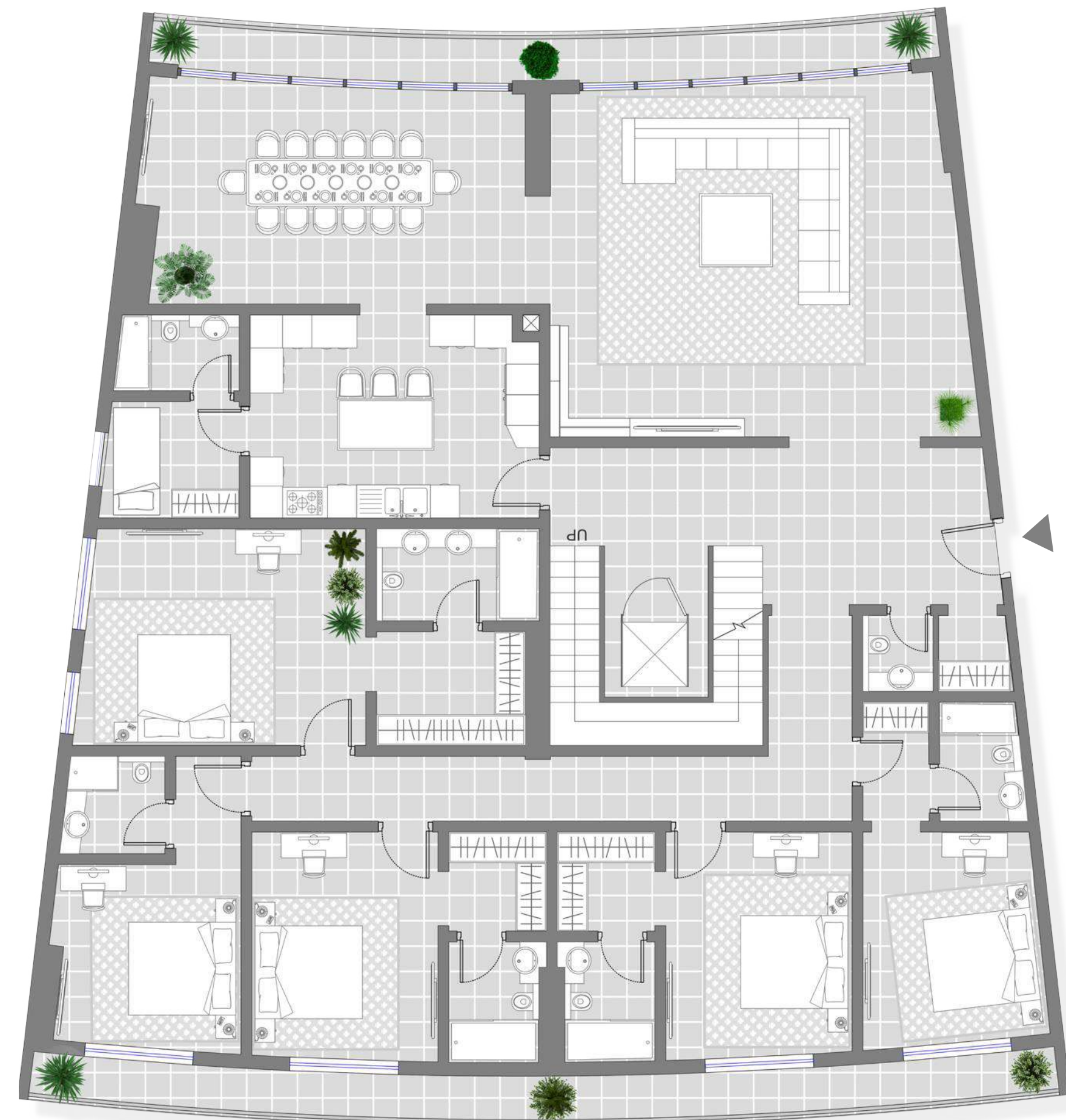
6-13 floors



3 BEDROOM APARTMENTS

Suite Area: 1,511 SQFT
Balcony Area: 153 SQFT
Total Area: 1,664 SQFT



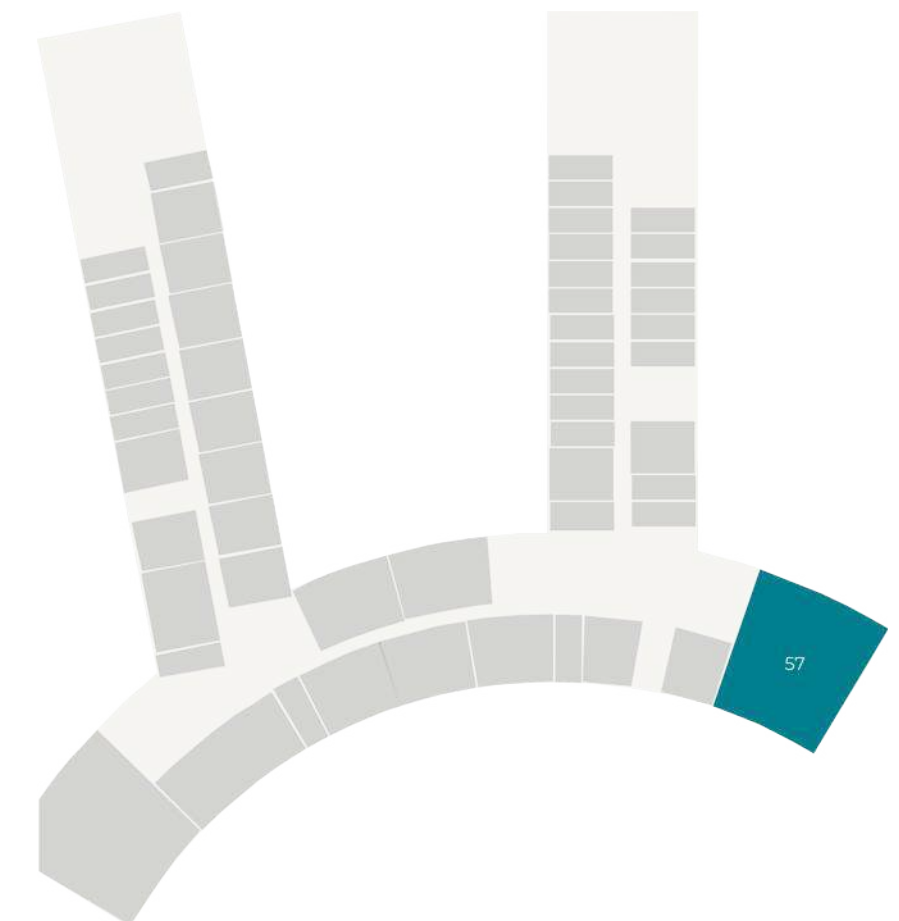


SOUTH PENTHOUSE

Total Area: 6,984 SQFT
Suite Area: 3,479 SQFT
Terrace Area: 3,505 SQFT



14 floor





NORTH PENTHOUSE

Toral Area: 6,892 SQFT
Suite Area: 3,529 SQFT
Terrace Area: 3,363 SQFT

14 floor

