



Immobilie
Dubai

Stephan Gebhardt
☎ +971 585303840

WhatsApp +49 151 53133055
www.immobilie-dubai.de



SARIA | FLOOR PLANS

BEYOND



WhatsApp +971 585303840 / Telefon +49 156 78561251

www.immobilie-dubai.de

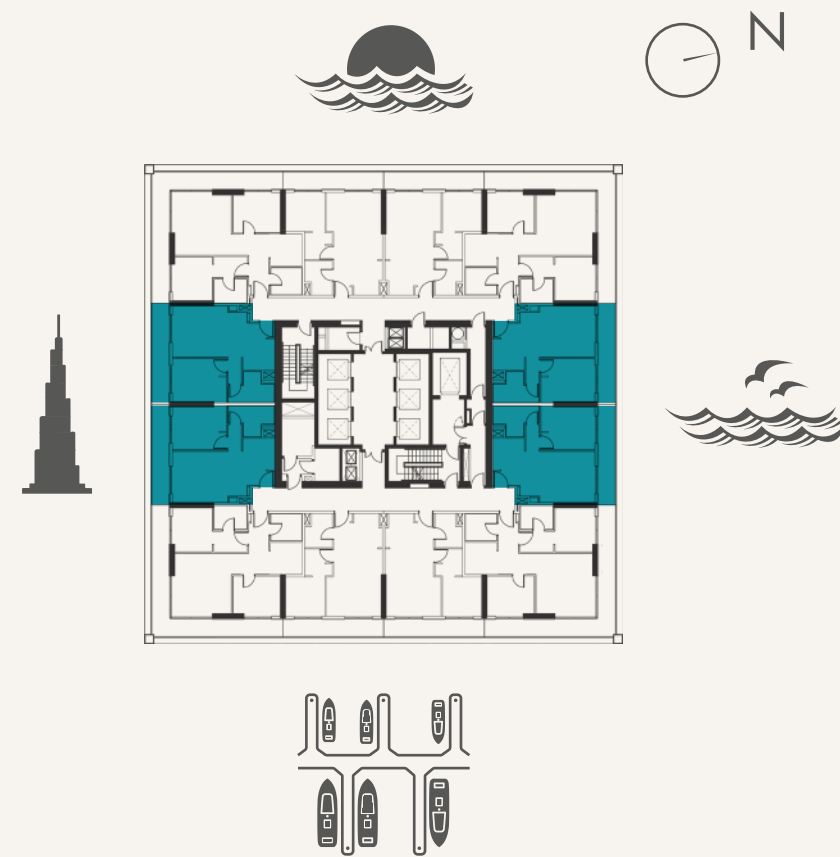


1 BEDROOM

TYPE A1

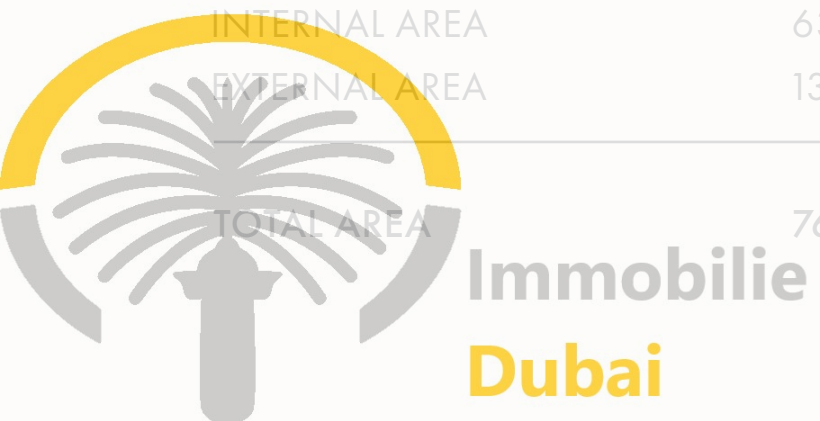
LEVEL 2-9

UNIT 01, 06, 07, 12



UNIT AREA

INTERNAL AREA	63 SQ.M.	686 SQ.FT.
EXTERNAL AREA	13 SQ.M.	142 SQ.FT.
TOTAL AREA	76 SQ.M.	828 SQ.FT.



Disclaimer: The unit layout, floor plans, dimensions, drawings and measurements are indicative in nature and are subject to change as the construction of the project progresses. All efforts have been made to ensure their accuracy, however these layouts are subject to change at the discretion of the developer or upon the instructions of the relevant authority and should not be relied upon as final. The actual area of the unit may vary from the area stated in the brochure and the developer reserves the right to make the revisions, alterations, modifications, additions, deletions and substitutions at its absolute discretion, without any liability whatsoever.

WhatsApp +971 585303840 / Telefon +49 156 78561251

www.immobilie-dubai.de

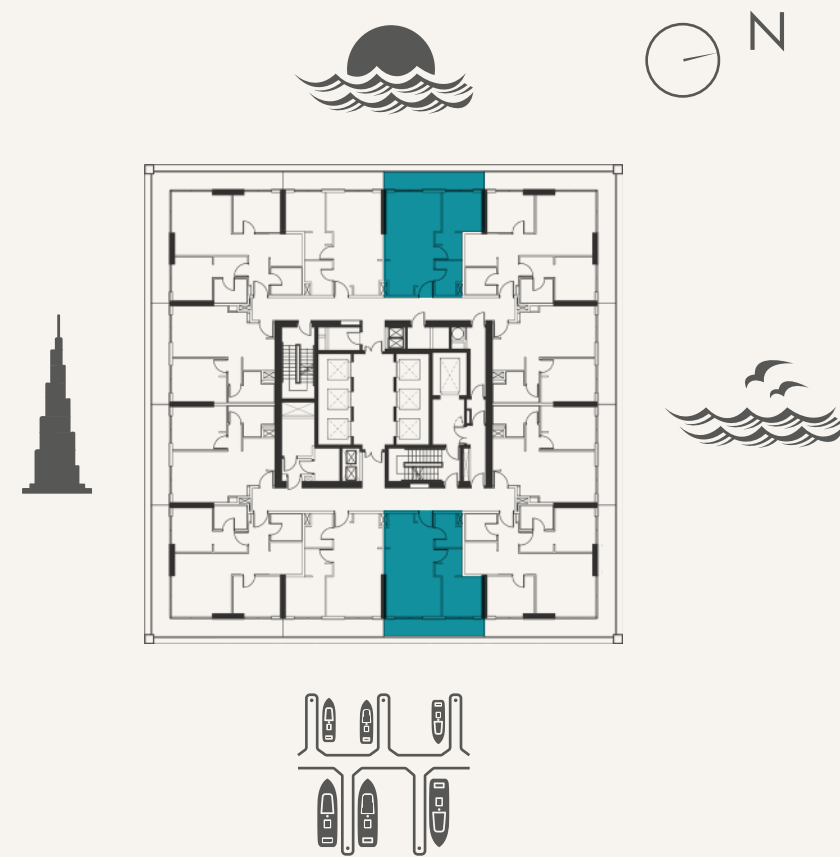


1 BEDROOM

TYPE B1-A

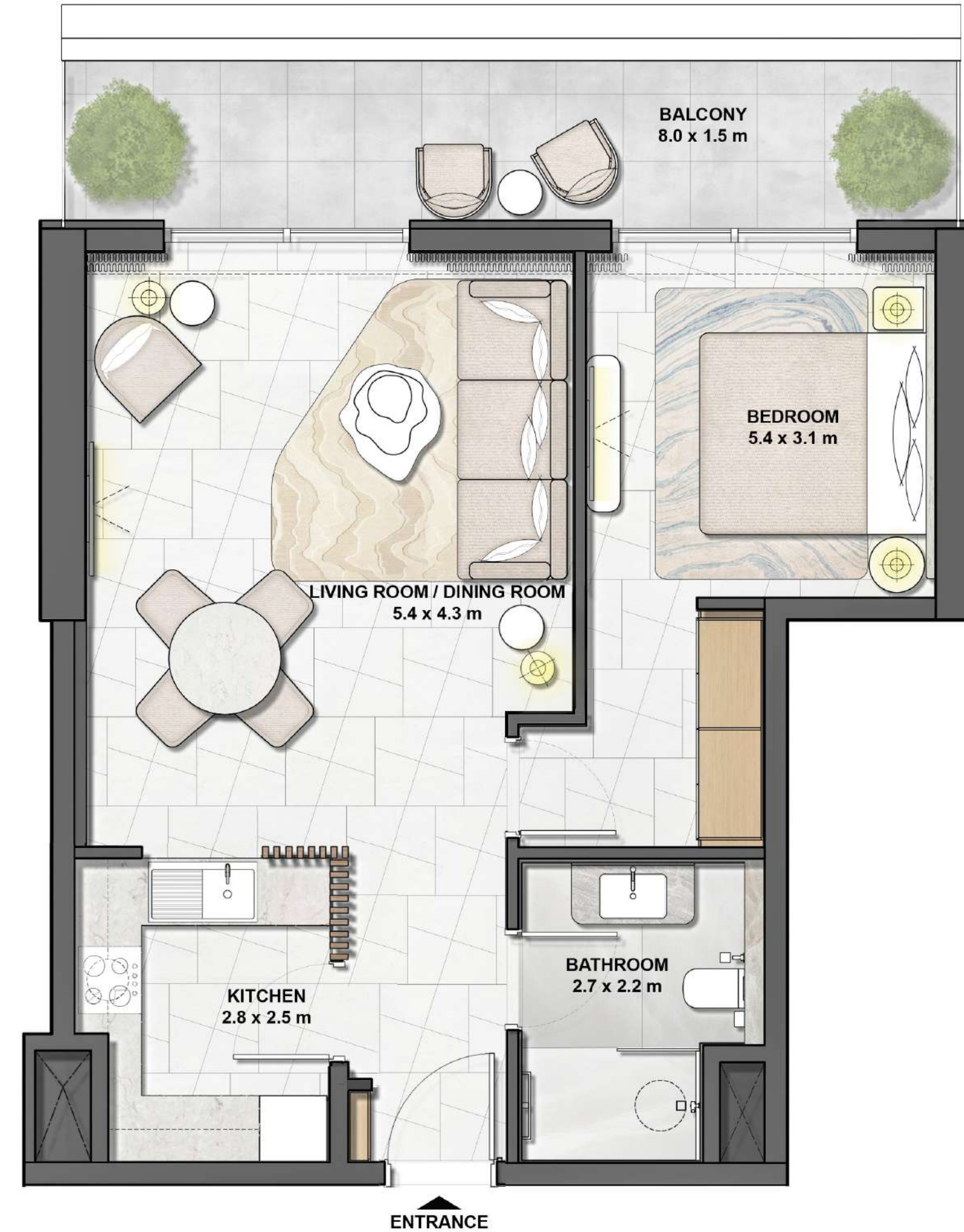
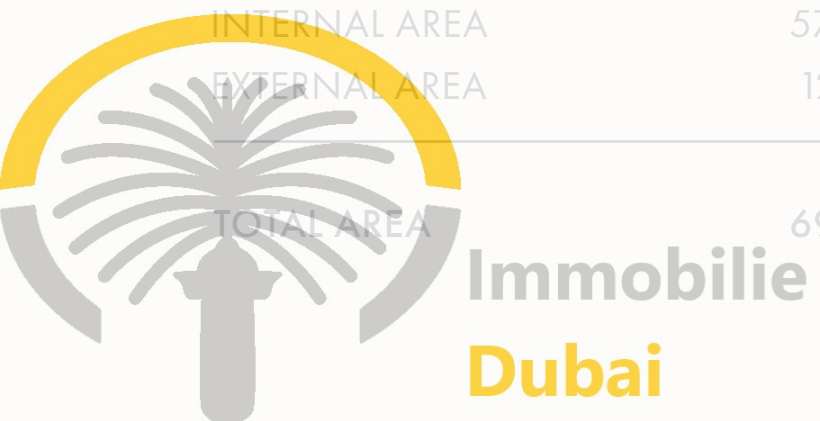
LEVEL 2-9

UNIT 04, 09



UNIT AREA

INTERNAL AREA	57 SQ.M.	623 SQ.FT.
EXTERNAL AREA	12 SQ.M.	135 SQ.FT.
TOTAL AREA	69 SQ.M.	758 SQ.FT.



Disclaimer: The unit layout, floor plans, dimensions, drawings and measurements are indicative in nature and are subject to change as the construction of the project progresses. All efforts have been made to ensure their accuracy, however these layouts are subject to change at the discretion of the developer or upon the instructions of the relevant authority and should not be relied upon as final. The actual area of the unit may vary from the area stated in the brochure and the developer reserves the right to make the revisions, alterations, modifications, additions, deletions and substitutions at its absolute discretion, without any liability whatsoever.

WhatsApp +971 585303840 / Telefon +49 156 78561251

www.immobilie-dubai.de

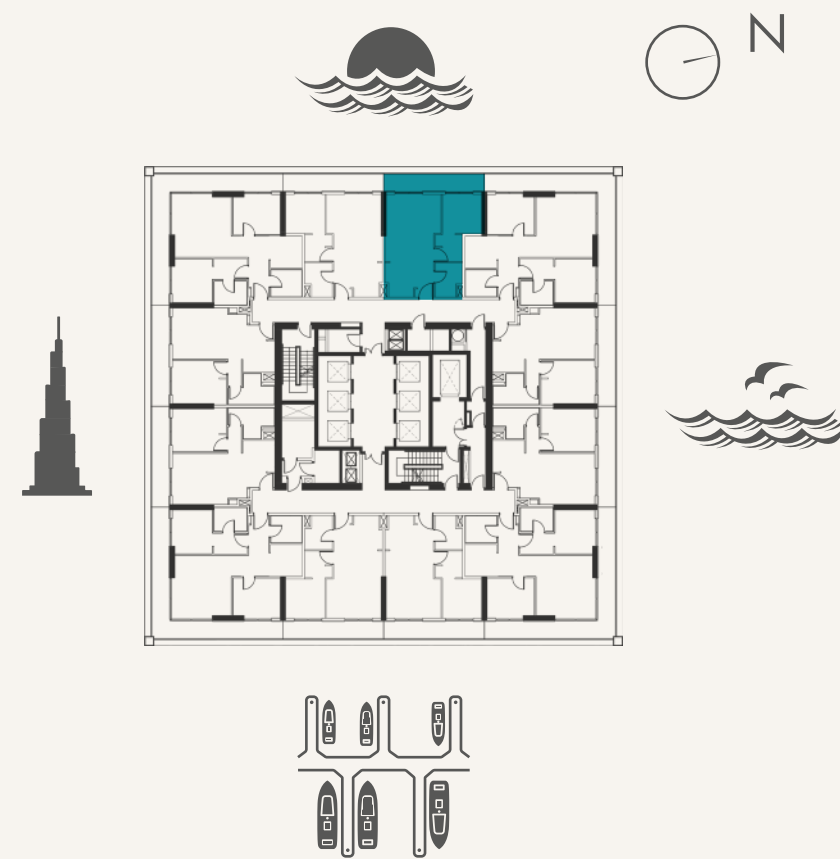


1 BEDROOM

TYPE B1-A

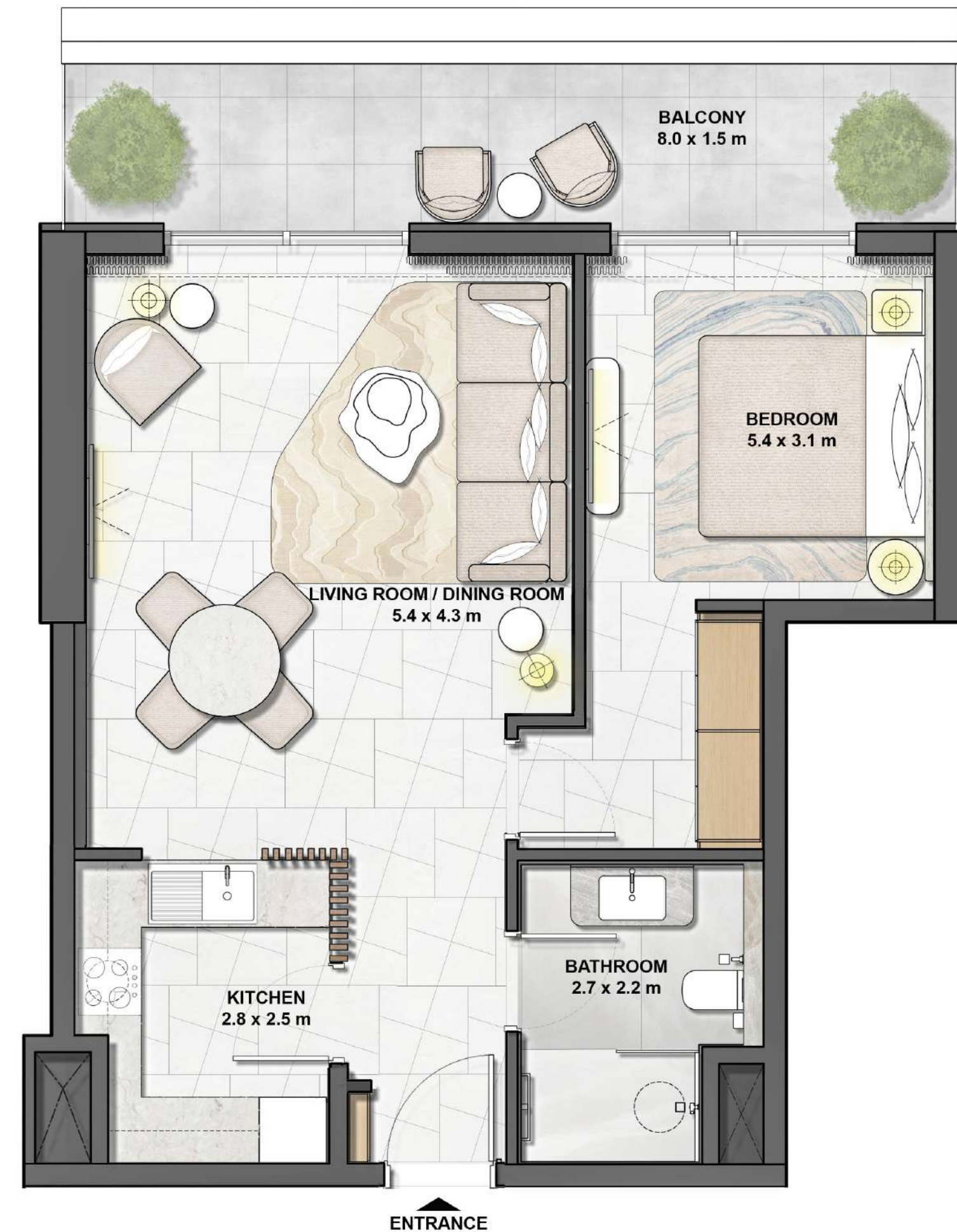
LEVEL 10-19 & 21-36

UNIT 04



UNIT AREA

INTERNAL AREA	57 SQ.M.	623 SQ.FT.
EXTERNAL AREA	12 SQ.M.	135 SQ.FT.
TOTAL AREA	70 SQ.M.	758 SQ.FT.



Disclaimer: The unit layout, floor plans, dimensions, drawings and measurements are indicative in nature and are subject to change as the construction of the project progresses. All efforts have been made to ensure their accuracy, however these layouts are subject to change at the discretion of the developer or upon the instructions of the relevant authority and should not be relied upon as final. The actual area of the unit may vary from the area stated in the brochure and the developer reserves the right to make the revisions, alterations, modifications, additions, deletions and substitutions at its absolute discretion, without any liability whatsoever.

WhatsApp +971 585303840 / Telefon +49 156 78561251

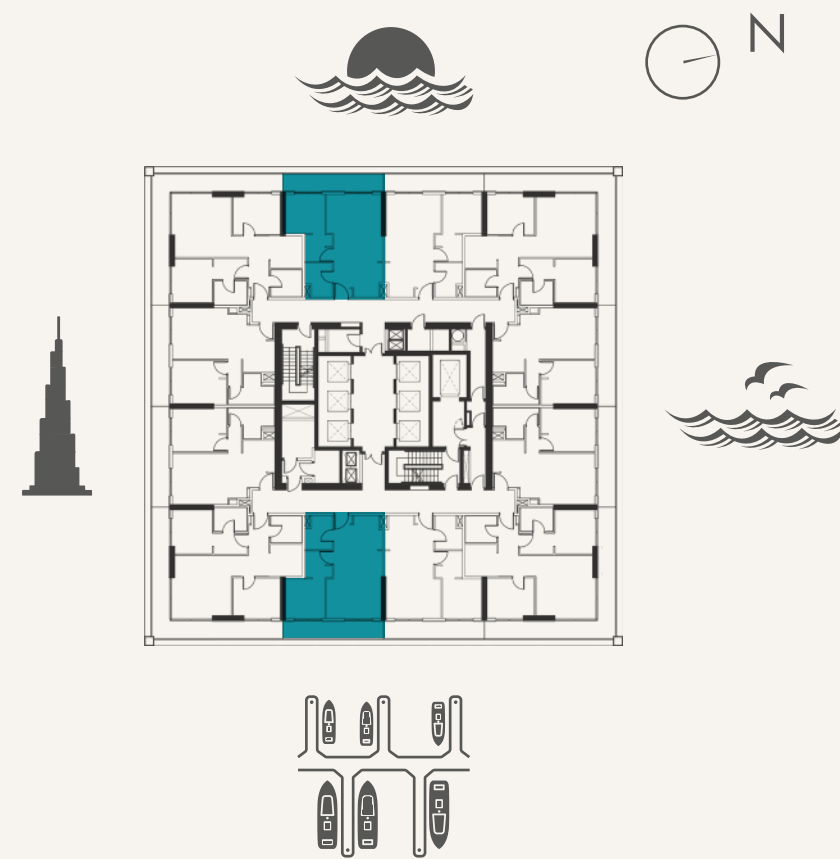
www.immobilie-dubai.de



1 BEDROOM

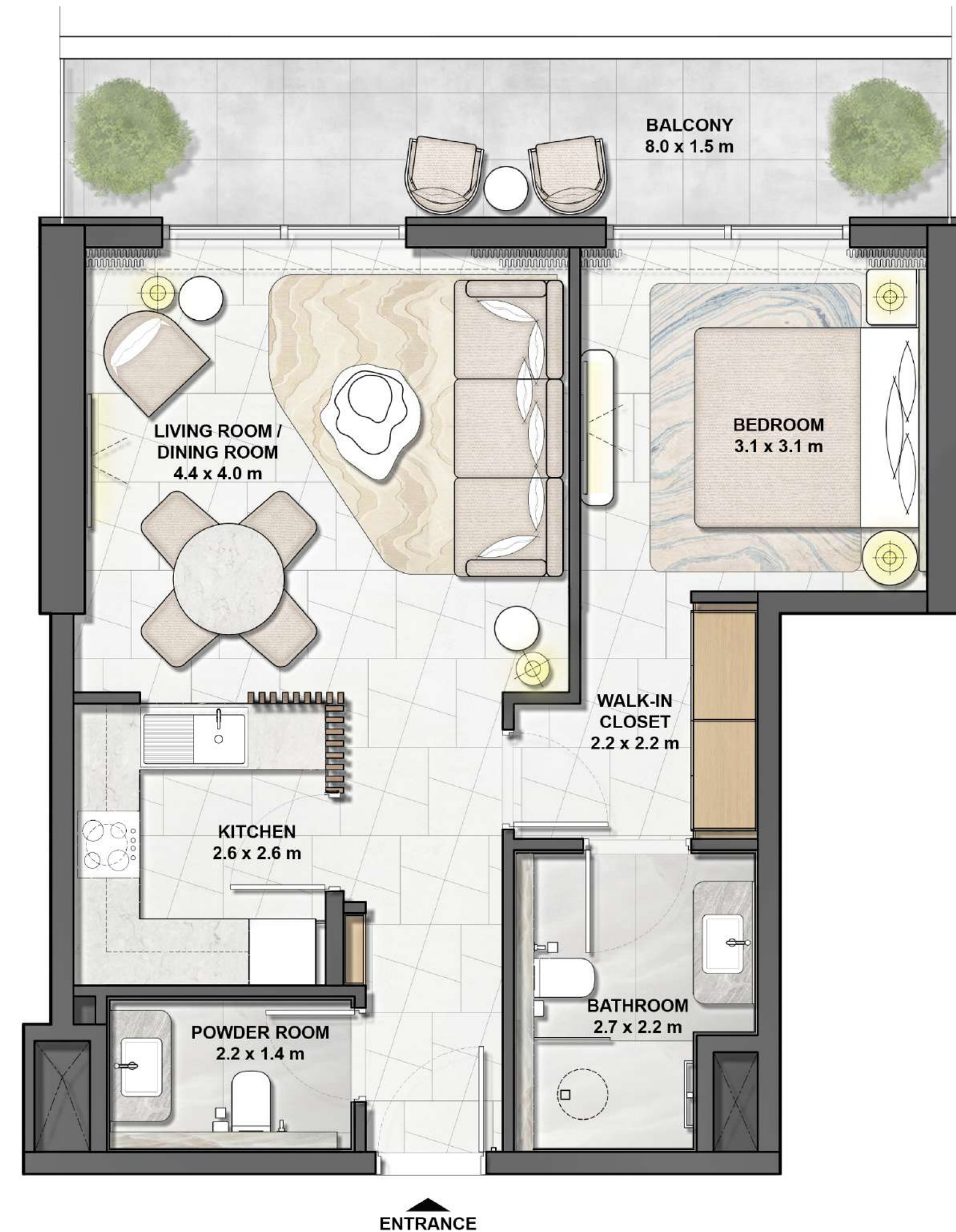
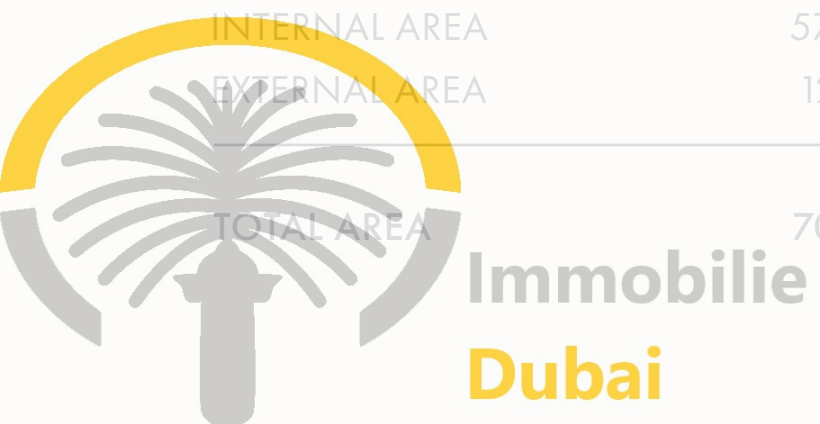
TYPE B1-B

LEVEL 2-9
UNIT 03, 10



UNIT AREA

INTERNAL AREA	57 SQ.M.	623 SQ.FT.
EXTERNAL AREA	12 SQ.M.	135 SQ.FT.
TOTAL AREA	70 SQ.M.	758 SQ.FT.



Disclaimer: The unit layout, floor plans, dimensions, drawings and measurements are indicative in nature and are subject to change as the construction of the project progresses. All efforts have been made to ensure their accuracy, however these layouts are subject to change at the discretion of the developer or upon the instructions of the relevant authority and should not be relied upon as final. The actual area of the unit may vary from the area stated in the brochure and the developer reserves the right to make the revisions, alterations, modifications, additions, deletions and substitutions at its absolute discretion, without any liability whatsoever.

WhatsApp +971 585303840 / Telefon +49 156 78561251

www.immobilie-dubai.de

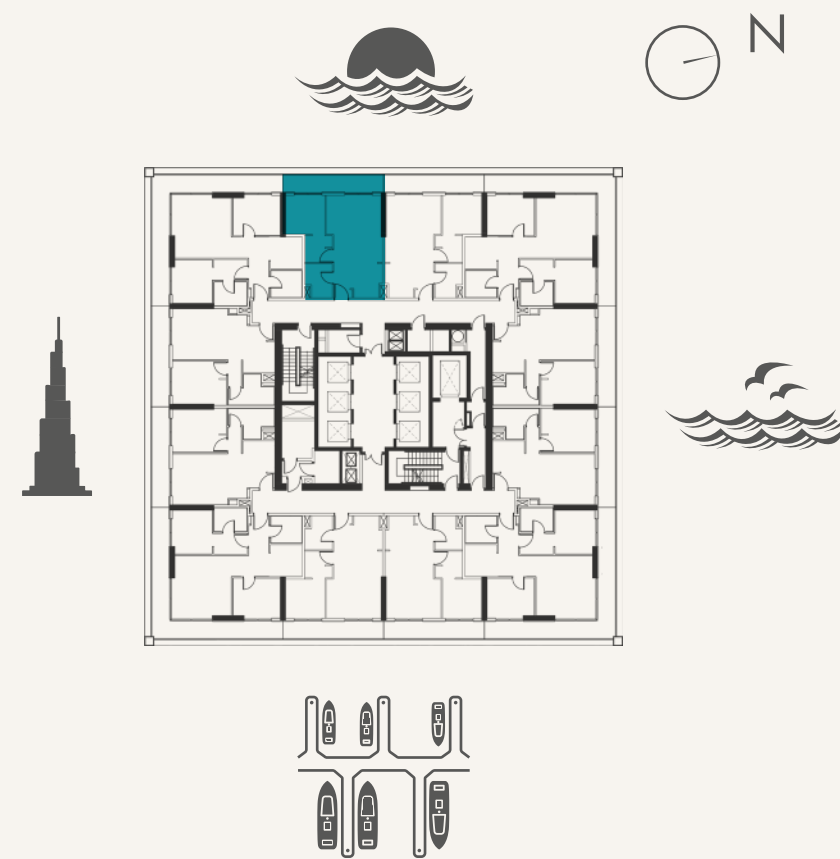


1 BEDROOM

TYPE B1-B

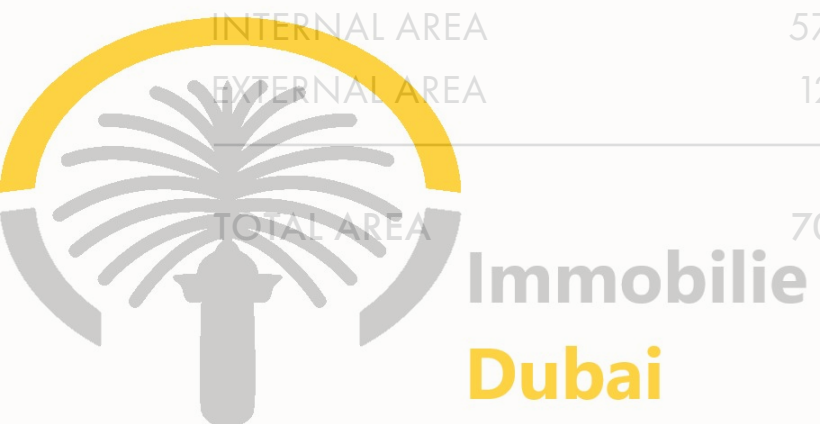
LEVEL 10-19, 21-36

UNIT 03



UNIT AREA

INTERNAL AREA	57 SQ.M.	623 SQ.FT.
EXTERNAL AREA	12 SQ.M.	135 SQ.FT.
TOTAL AREA	70 SQ.M.	758 SQ.FT.



Disclaimer: The unit layout, floor plans, dimensions, drawings and measurements are indicative in nature and are subject to change as the construction of the project progresses. All efforts have been made to ensure their accuracy, however these layouts are subject to change at the discretion of the developer or upon the instructions of the relevant authority and should not be relied upon as final. The actual area of the unit may vary from the area stated in the brochure and the developer reserves the right to make the revisions, alterations, modifications, additions, deletions and substitutions at its absolute discretion, without any liability whatsoever.

WhatsApp +971 585303840 / Telefon +49 156 78561251

www.immobilie-dubai.de

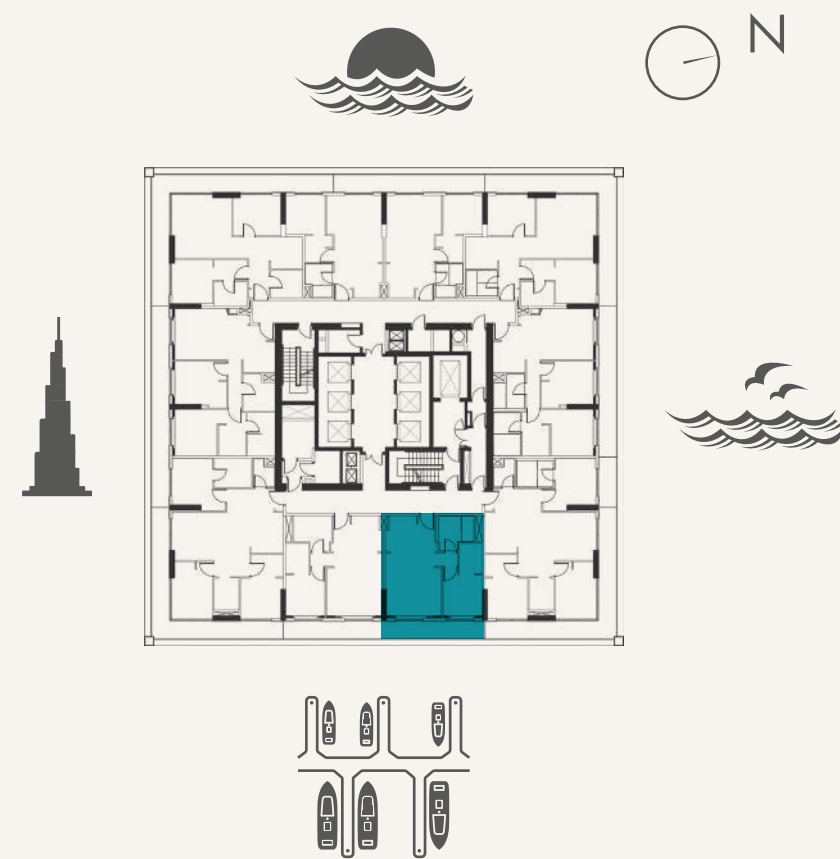


1 BEDROOM

TYPE C1-A

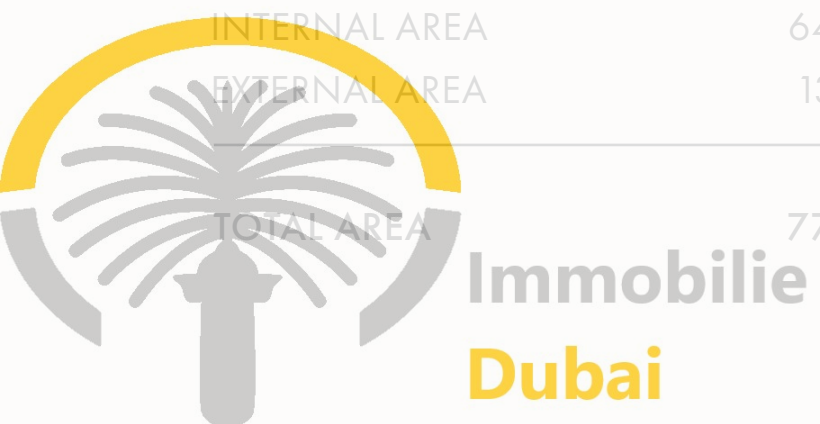
LEVEL 12-19, 21-34

UNIT 08



UNIT AREA

INTERNAL AREA	64 SQ.M.	696 SQ.FT.
EXTERNAL AREA	13 SQ.M.	142 SQ.FT.
TOTAL AREA	77 SQ.M.	838 SQ.FT.



Disclaimer: The unit layout, floor plans, dimensions, drawings and measurements are indicative in nature and are subject to change as the construction of the project progresses. All efforts have been made to ensure their accuracy, however these layouts are subject to change at the discretion of the developer or upon the instructions of the relevant authority and should not be relied upon as final. The actual area of the unit may vary from the area stated in the brochure and the developer reserves the right to make the revisions, alterations, modifications, additions, deletions and substitutions at its absolute discretion, without any liability whatsoever.

WhatsApp +971 585303840 / Telefon +49 156 78561251

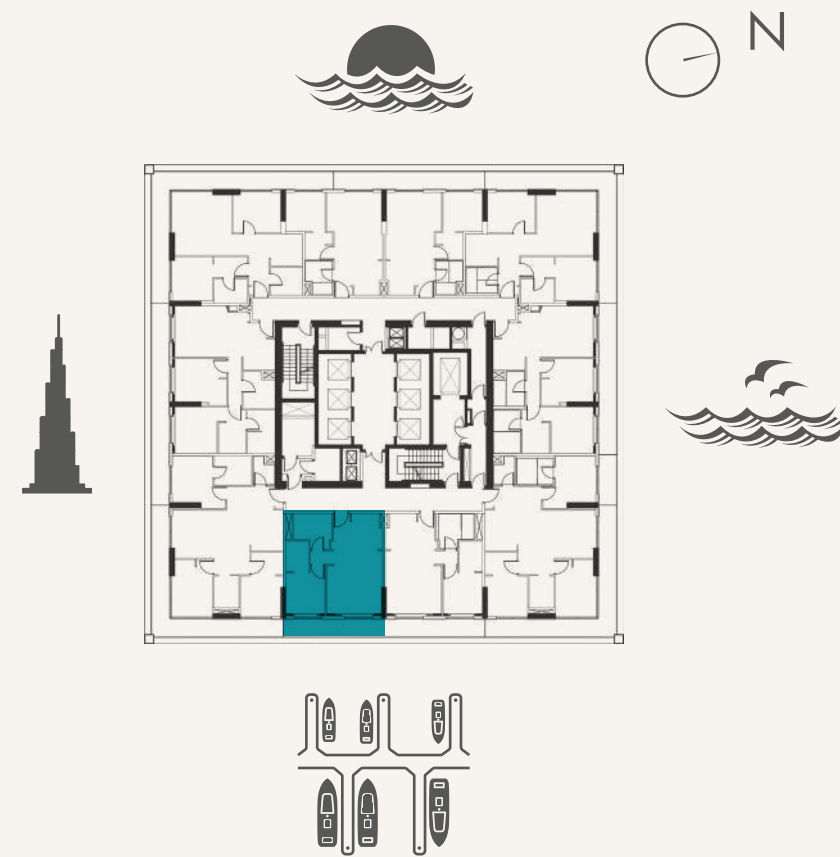
www.immobilie-dubai.de



1 BEDROOM

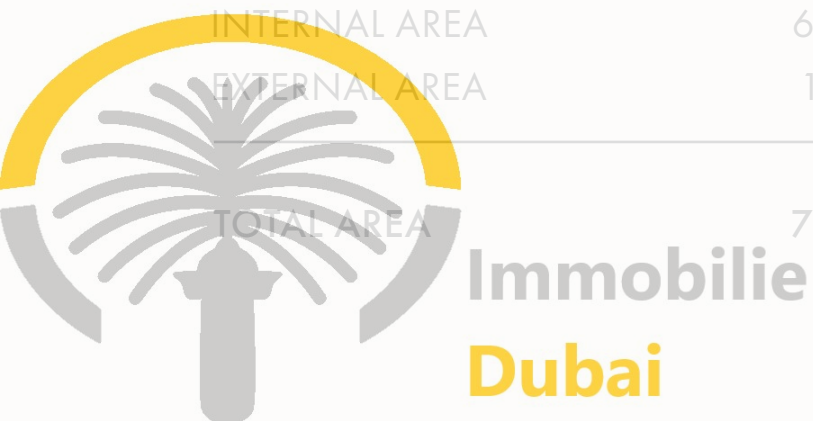
TYPE C1-B

LEVEL 12-19, 21-34
UNIT 09



UNIT AREA

INTERNAL AREA	64 SQ.M.	696 SQ.FT.
EXTERNAL AREA	13 SQ.M.	142 SQ.FT.
TOTAL AREA	77 SQ.M.	838 SQ.FT.



Disclaimer: The unit layout, floor plans, dimensions, drawings and measurements are indicative in nature and are subject to change as the construction of the project progresses. All efforts have been made to ensure their accuracy, however these layouts are subject to change at the discretion of the developer or upon the instructions of the relevant authority and should not be relied upon as final. The actual area of the unit may vary from the area stated in the brochure and the developer reserves the right to make the revisions, alterations, modifications, additions, deletions and substitutions at its absolute discretion, without any liability whatsoever.

WhatsApp +971 585303840 / Telefon +49 156 78561251

www.immobilie-dubai.de

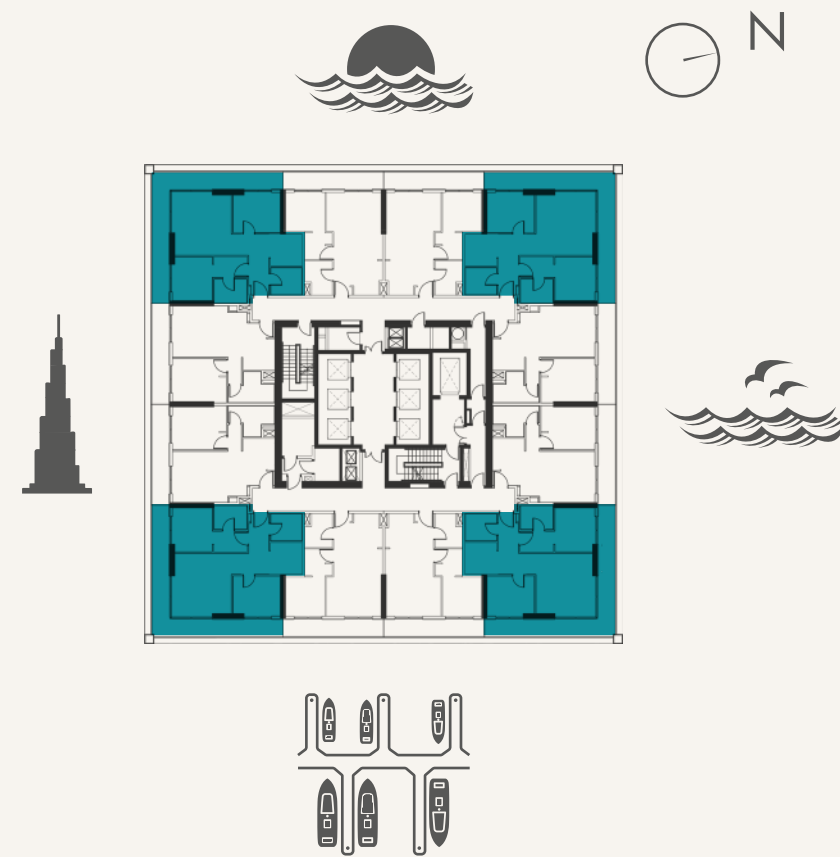


2 BEDROOM

TYPE 2A-1

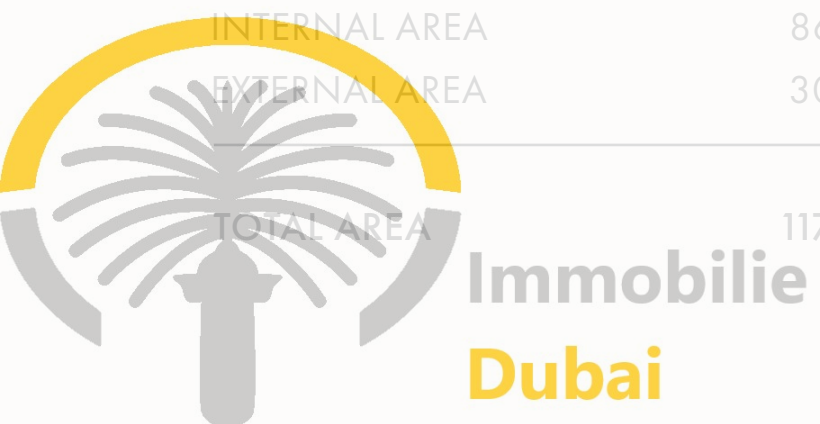
LEVEL 2-9

UNIT 02, 05, 08, 11



UNIT AREA

INTERNAL AREA	85 SQ.M.	931 SQ.FT.
EXTERNAL AREA	30 SQ.M.	331 SQ.FT.
TOTAL AREA	117 SQ.M.	1,262 SQ.FT.



Disclaimer: The unit layout, floor plans, dimensions, drawings and measurements are indicative in nature and are subject to change as the construction of the project progresses. All efforts have been made to ensure their accuracy, however these layouts are subject to change at the discretion of the developer or upon the instructions of the relevant authority and should not be relied upon as final. The actual area of the unit may vary from the area stated in the brochure and the developer reserves the right to make the revisions, alterations, modifications, additions, deletions and substitutions at its absolute discretion, without any liability whatsoever.

WhatsApp +971 585303840 / Telefon +49 156 78561251

www.immobilie-dubai.de

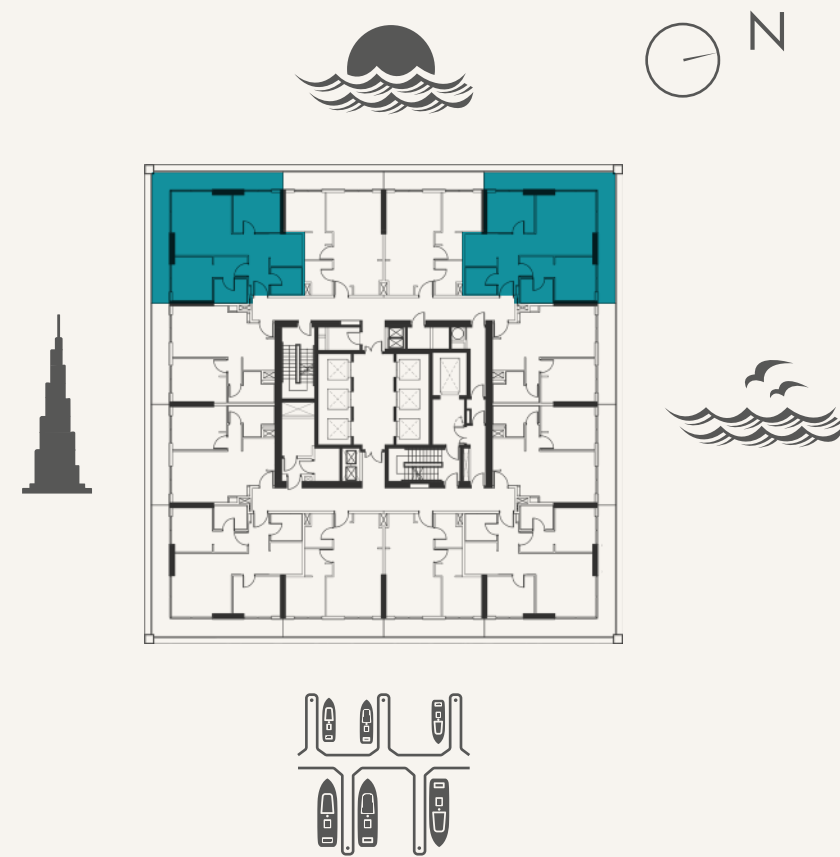


2 BEDROOM

TYPE 2A-1

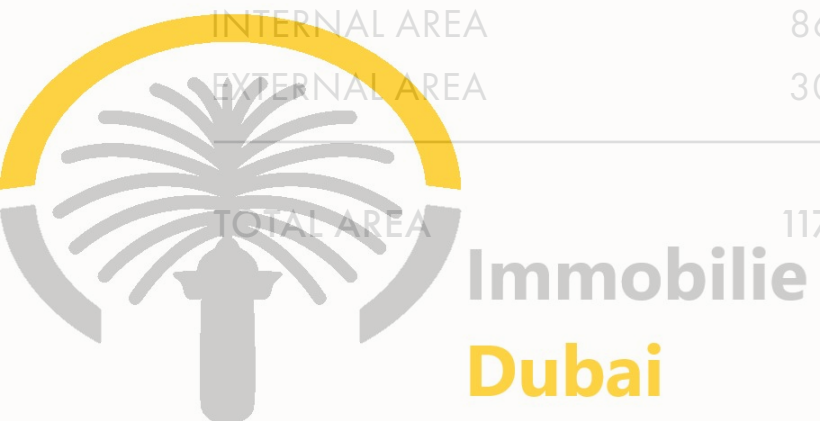
LEVEL 10-19, 21-36

UNIT 02, 05



UNIT AREA

INTERNAL AREA	85 SQ.M.	931 SQ.FT.
EXTERNAL AREA	30 SQ.M.	331 SQ.FT.
TOTAL AREA	117 SQ.M.	1,262 SQ.FT.



Disclaimer: The unit layout, floor plans, dimensions, drawings and measurements are indicative in nature and are subject to change as the construction of the project progresses. All efforts have been made to ensure their accuracy, however these layouts are subject to change at the discretion of the developer or upon the instructions of the relevant authority and should not be relied upon as final. The actual area of the unit may vary from the area stated in the brochure and the developer reserves the right to make the revisions, alterations, modifications, additions, deletions and substitutions at its absolute discretion, without any liability whatsoever.

WhatsApp +971 585303840 / Telefon +49 156 78561251

www.immobilie-dubai.de

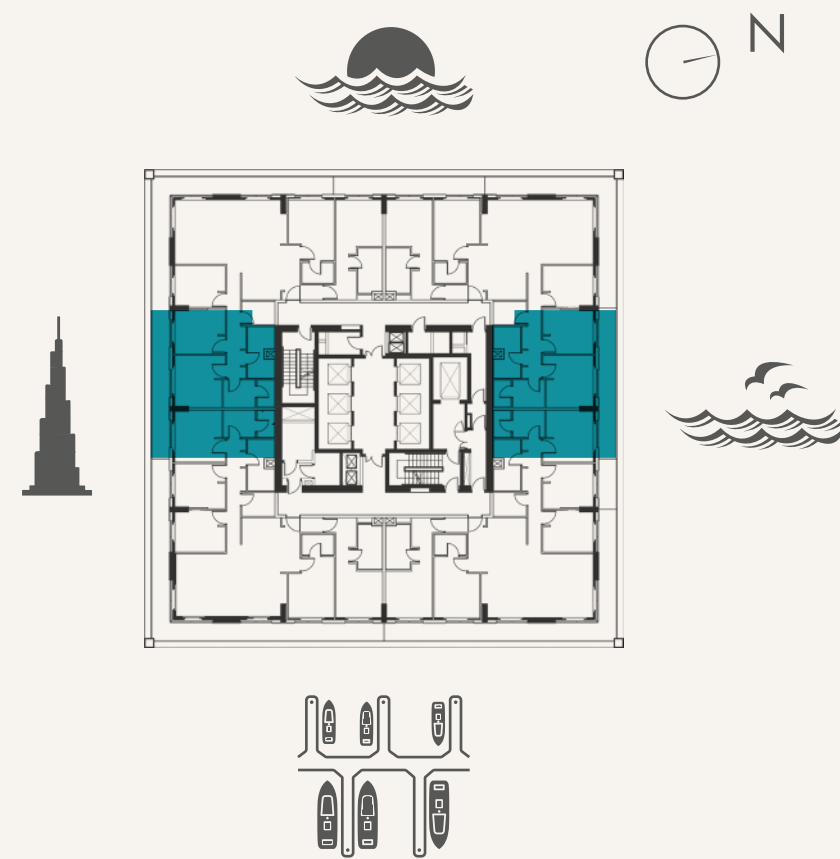


2 BEDROOM

TYPE 2B-1

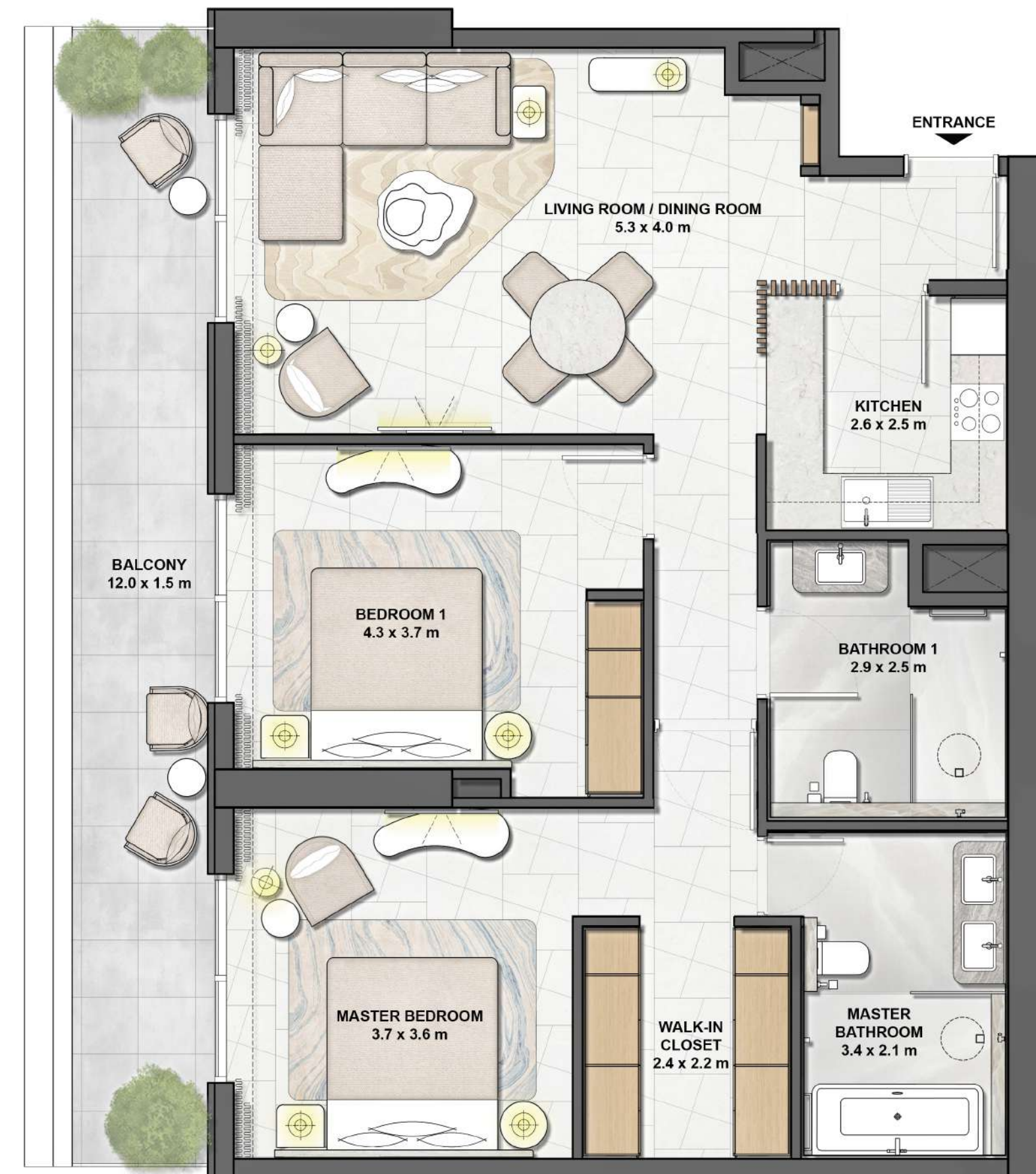
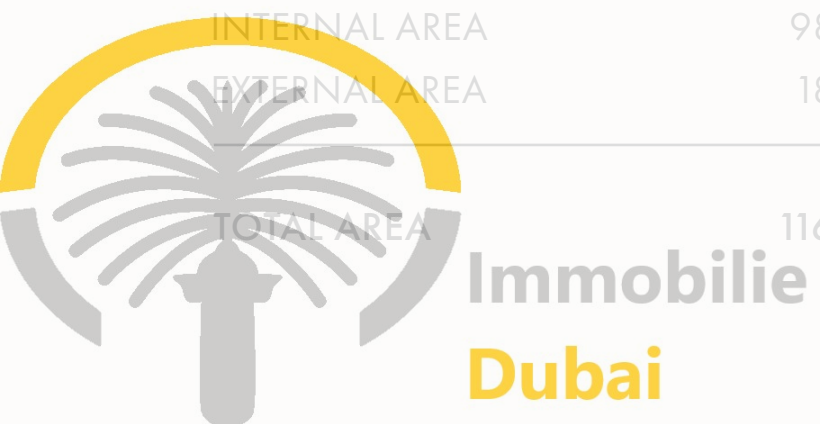
LEVEL 10-19, 21-36

UNIT 01, 06



UNIT AREA

INTERNAL AREA	93 SQ.M.	1,055 SQ.FT.
EXTERNAL AREA	13 SQ.M.	202 SQ.FT.
TOTAL AREA	115 SQ.M.	1,257 SQ.FT.



Disclaimer: The unit layout, floor plans, dimensions, drawings and measurements are indicative in nature and are subject to change as the construction of the project progresses. All efforts have been made to ensure their accuracy, however these layouts are subject to change at the discretion of the developer or upon the instructions of the relevant authority and should not be relied upon as final. The actual area of the unit may vary from the area stated in the brochure and the developer reserves the right to make the revisions, alterations, modifications, additions, deletions and substitutions at its absolute discretion, without any liability whatsoever.

WhatsApp +971 585303840 / Telefon +49 156 78561251

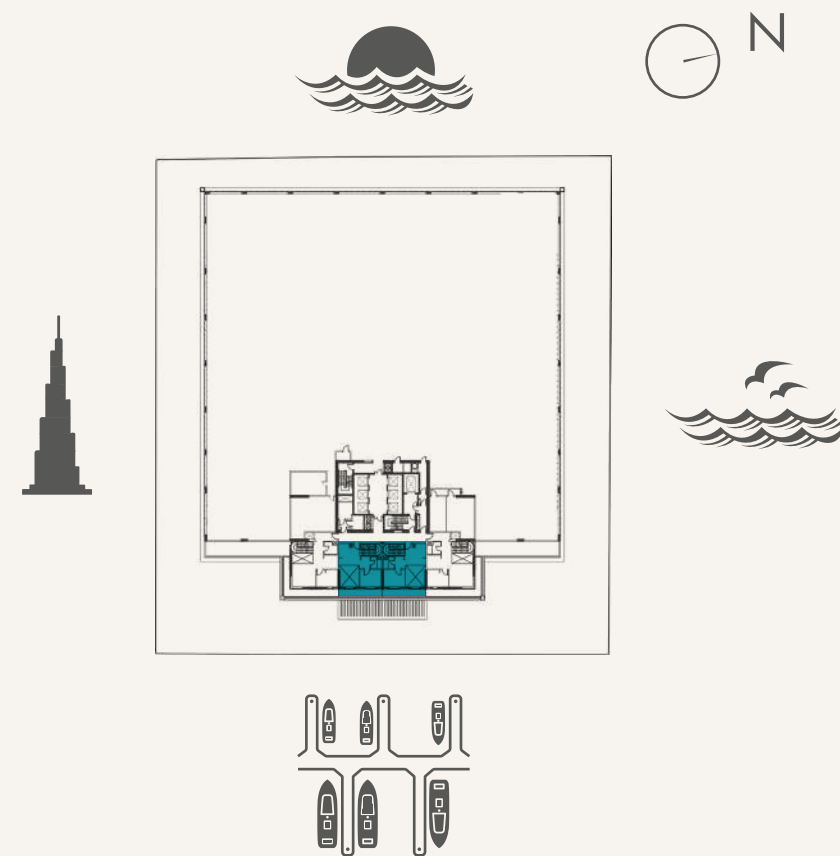
www.immobilie-dubai.de



2 BEDROOM

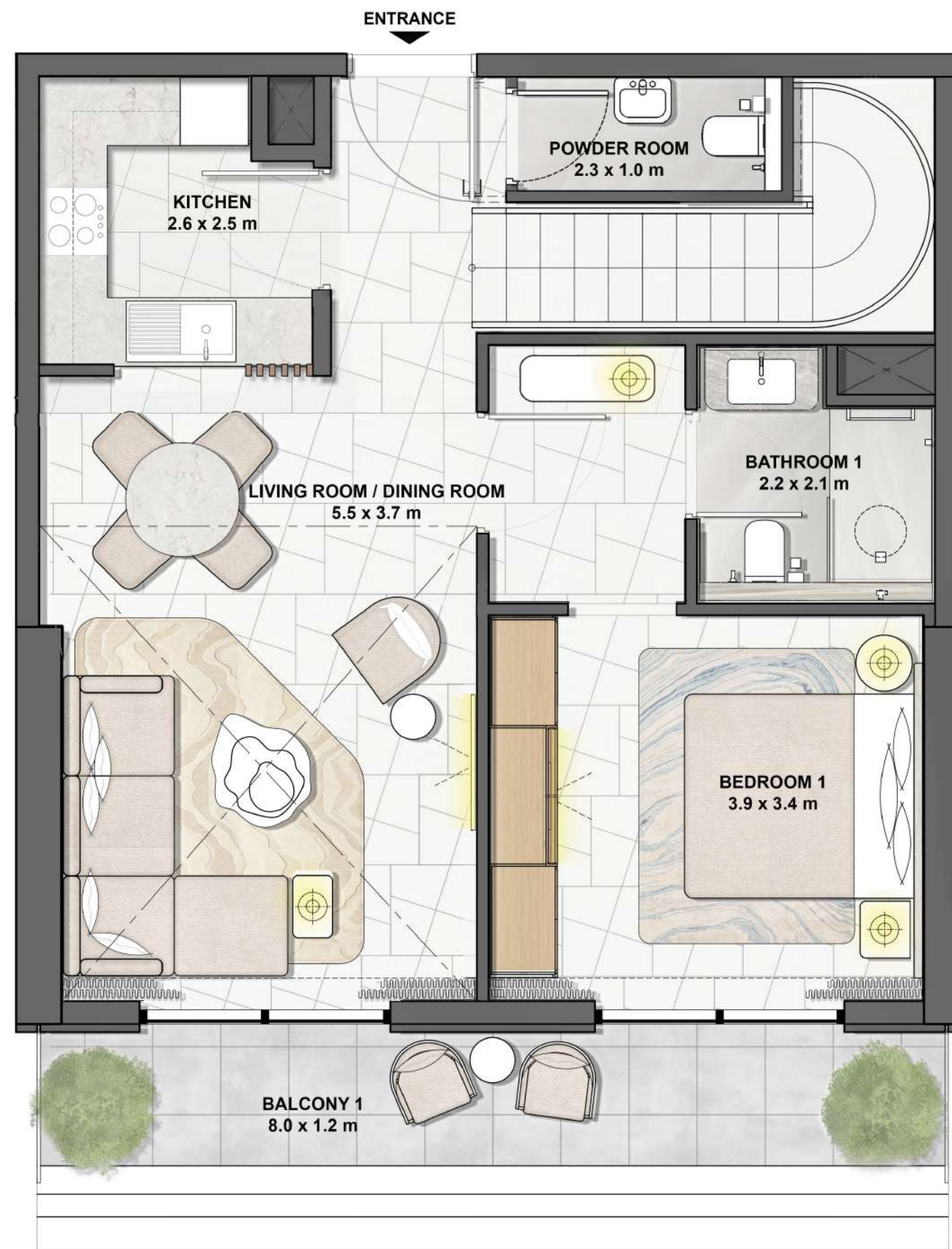
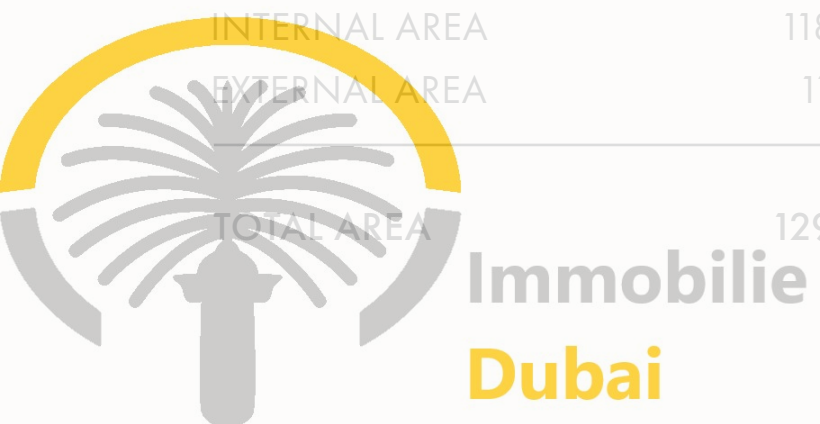
TYPE 2C

LEVEL P1, P3
UNIT 02, 03

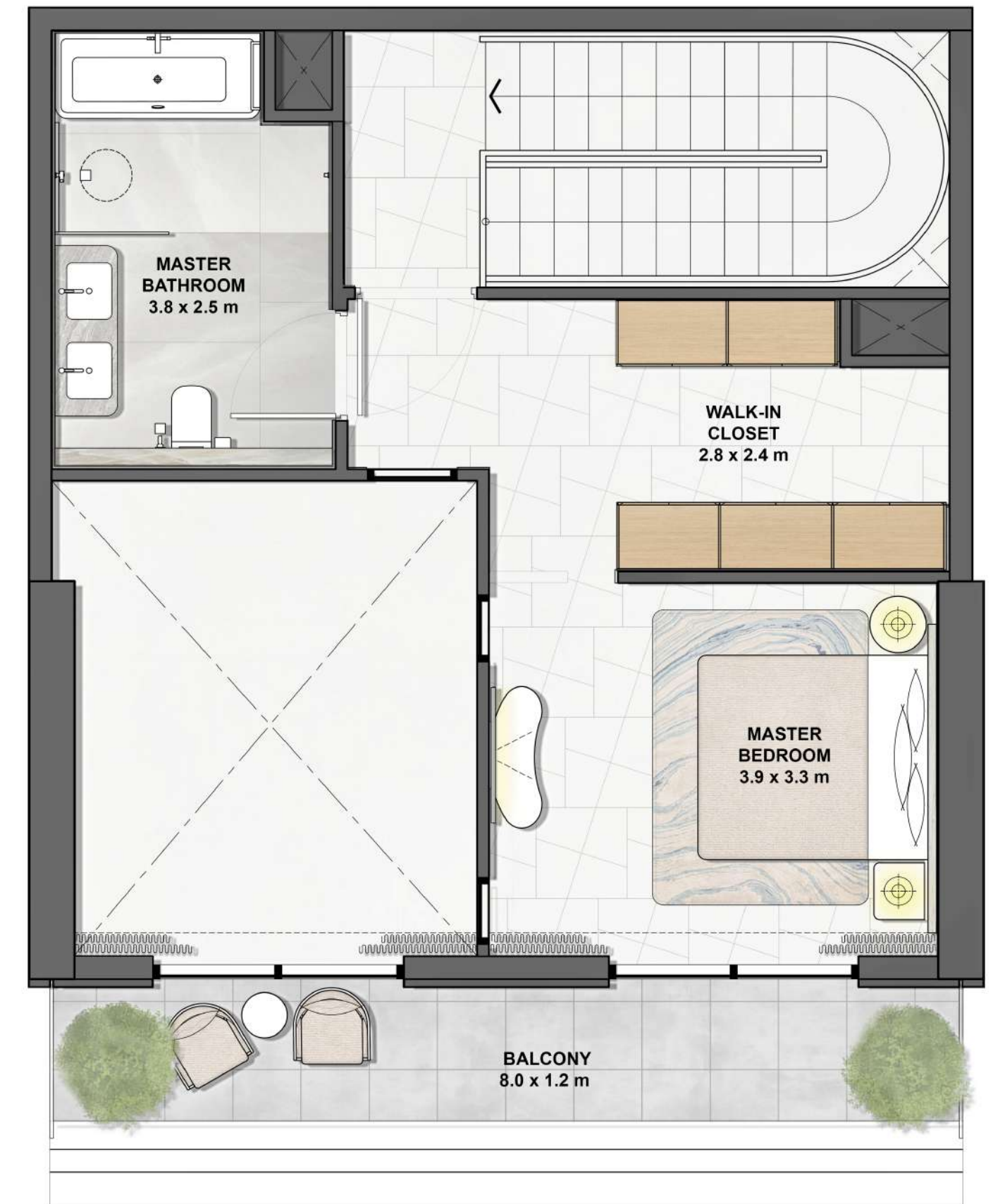


UNIT AREA

INTERNAL AREA	113 SQ.M.	1,274 SQ.FT.
EXTERNAL AREA	11 SQ.M.	125 SQ.FT.
TOTAL AREA	129 SQ.M.	1,399 SQ.FT.



LOWER LEVEL



UPPER LEVEL

Disclaimer: The unit layout, floor plans, dimensions, drawings and measurements are indicative in nature and are subject to change as the construction of the project progresses. All efforts have been made to ensure their accuracy, however these layouts are subject to change at the discretion of the developer or upon the instructions of the relevant authority and should not be relied upon as final. The actual area of the unit may vary from the area stated in the brochure and the developer reserves the right to make the revisions, alterations, modifications, additions, deletions and substitutions at its absolute discretion, without any liability whatsoever.

WhatsApp +971 585303840 / Telefon +49 156 78561251

www.immobilie-dubai.de

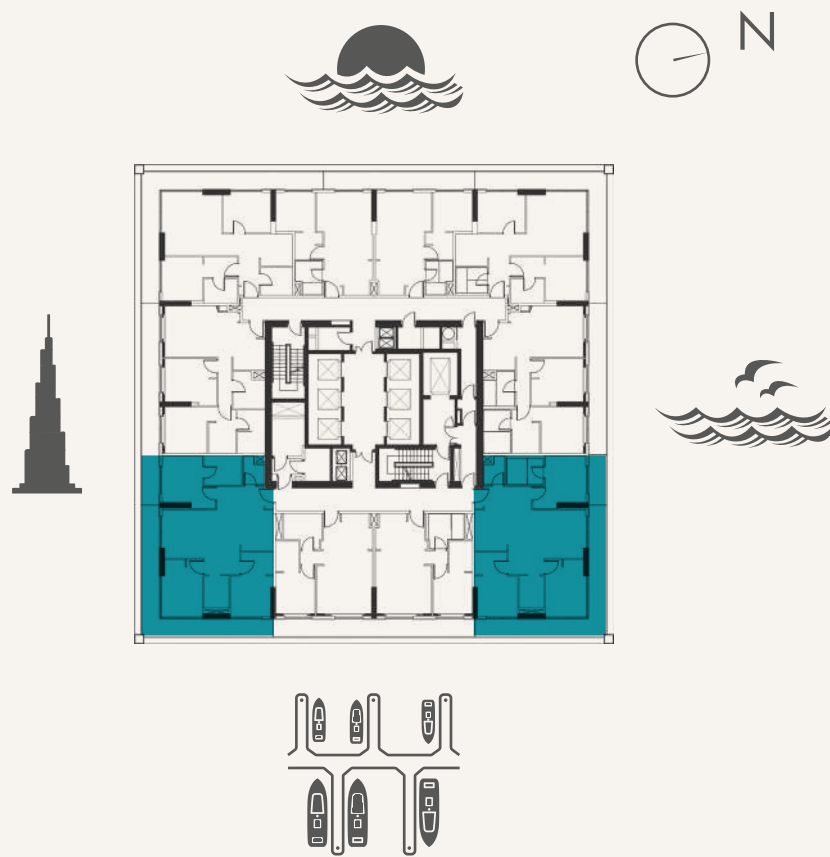


3 BEDROOM

TYPE 3A

LEVEL 10, 11, 35, 36

UNIT 07, 09



UNIT AREA

INTERNAL AREA	114 SQ.M.	1,234 SQ.FT.
EXTERNAL AREA	36 SQ.M.	398 SQ.FT.
TOTAL AREA	151 SQ.M.	1,632 SQ.FT.

Immobilie
Dubai



Disclaimer: The unit layout, floor plans, dimensions, drawings and measurements are indicative in nature and are subject to change as the construction of the project progresses. All efforts have been made to ensure their accuracy, however these layouts are subject to change at the discretion of the developer or upon the instructions of the relevant authority and should not be relied upon as final. The actual area of the unit may vary from the area stated in the brochure and the developer reserves the right to make the revisions, alterations, modifications, additions, deletions and substitutions at its absolute discretion, without any liability whatsoever.

WhatsApp +971 585303840 / Telefon +49 156 78561251

www.immobilie-dubai.de

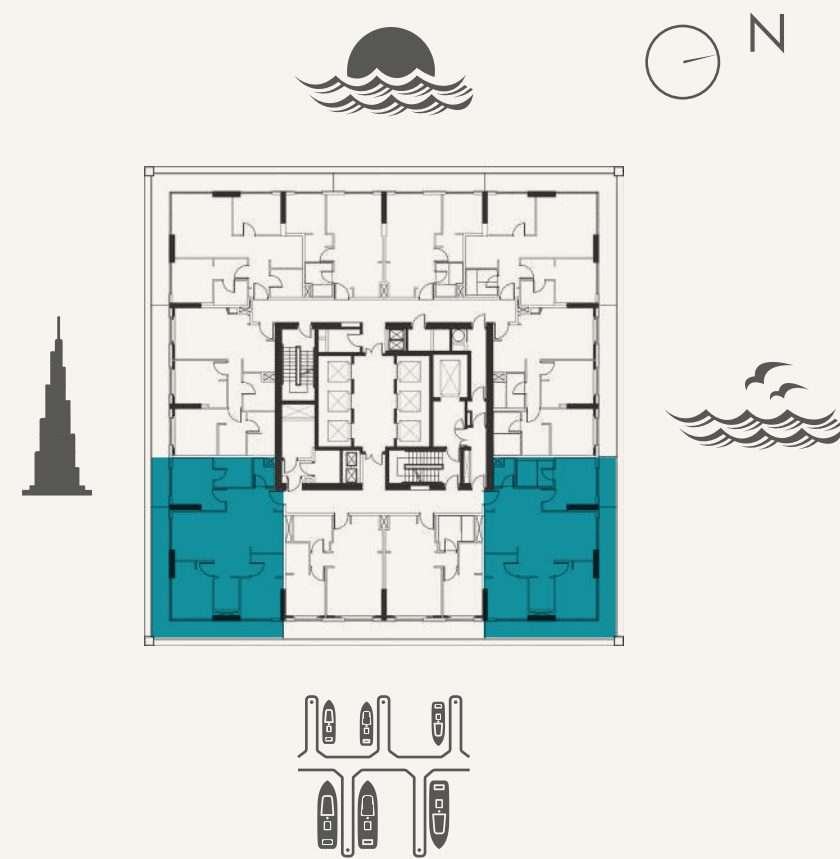


3 BEDROOM

TYPE 3A

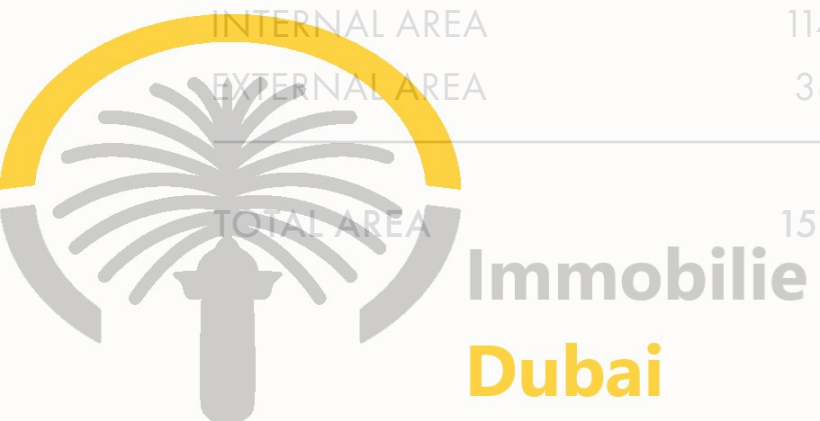
LEVEL 12-19, 21-34

UNIT 07, 10



UNIT AREA

INTERNAL AREA	114 SQ.M.	1,234 SQ.FT.
EXTERNAL AREA	36 SQ.M.	398 SQ.FT.
TOTAL AREA	151 SQ.M.	1,632 SQ.FT.



Disclaimer: The unit layout, floor plans, dimensions, drawings and measurements are indicative in nature and are subject to change as the construction of the project progresses. All efforts have been made to ensure their accuracy, however these layouts are subject to change at the discretion of the developer or upon the instructions of the relevant authority and should not be relied upon as final. The actual area of the unit may vary from the area stated in the brochure and the developer reserves the right to make the revisions, alterations, modifications, additions, deletions and substitutions at its absolute discretion, without any liability whatsoever.

WhatsApp +971 585303840 / Telefon +49 156 78561251

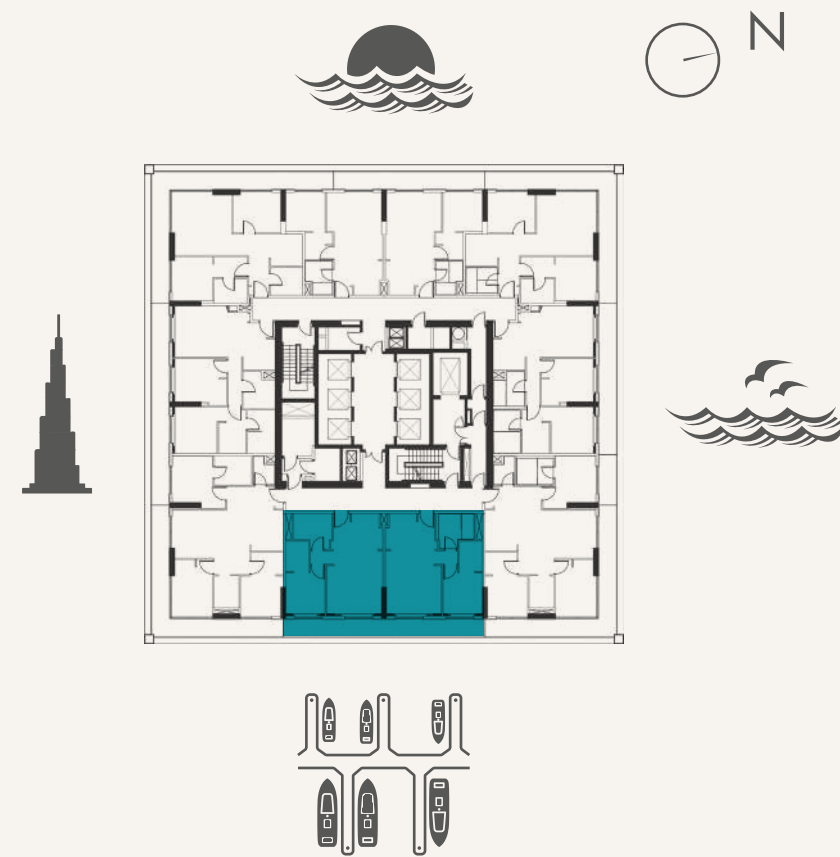
www.immobilie-dubai.de



3 BEDROOM

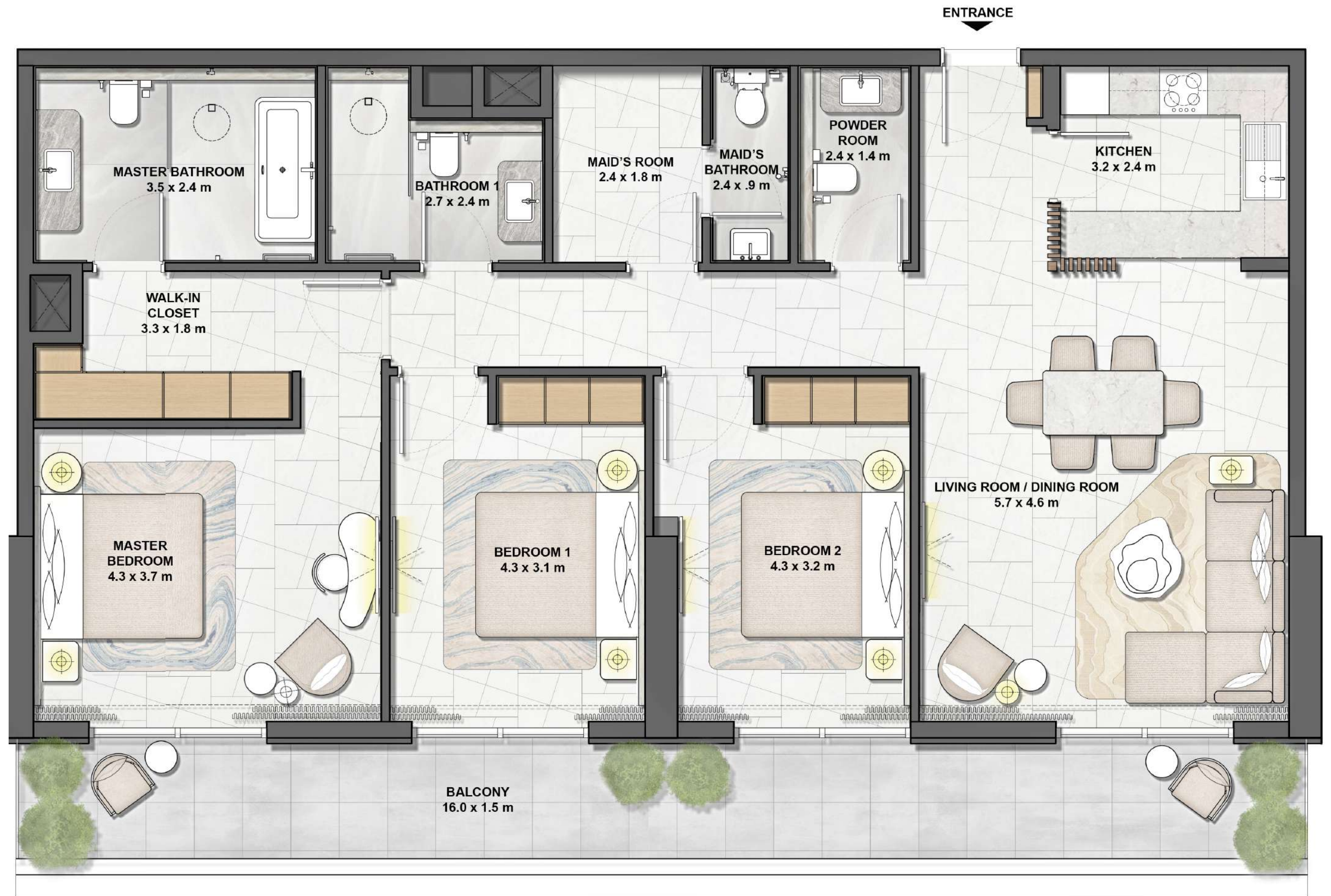
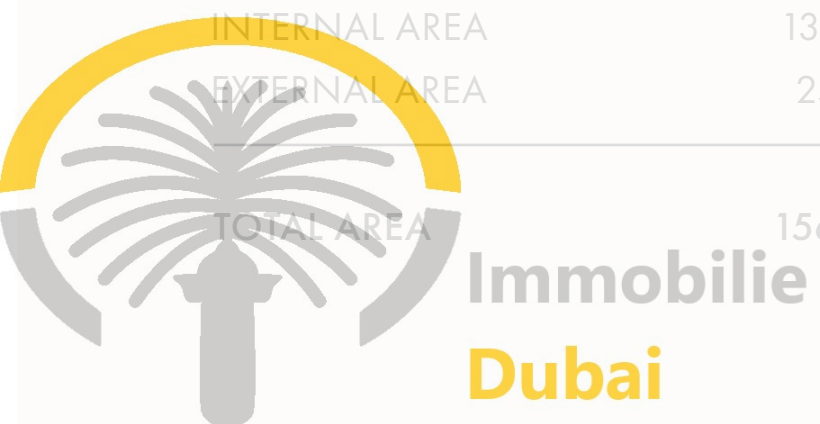
TYPE 3B

LEVEL 10, 11, 35, 36
UNIT 08



UNIT AREA

INTERNAL AREA	131 SQ.M.	1,415 SQ.FT.
EXTERNAL AREA	25 SQ.M.	270 SQ.FT.
TOTAL AREA	156 SQ.M.	1,685 SQ.FT.



Disclaimer: The unit layout, floor plans, dimensions, drawings and measurements are indicative in nature and are subject to change as the construction of the project progresses. All efforts have been made to ensure their accuracy, however these layouts are subject to change at the discretion of the developer or upon the instructions of the relevant authority and should not be relied upon as final. The actual area of the unit may vary from the area stated in the brochure and the developer reserves the right to make the revisions, alterations, modifications, additions, deletions and substitutions at its absolute discretion, without any liability whatsoever.

WhatsApp +971 585303840 / Telefon +49 156 78561251

www.immobilie-dubai.de

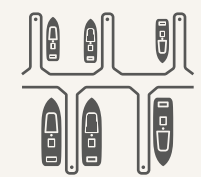
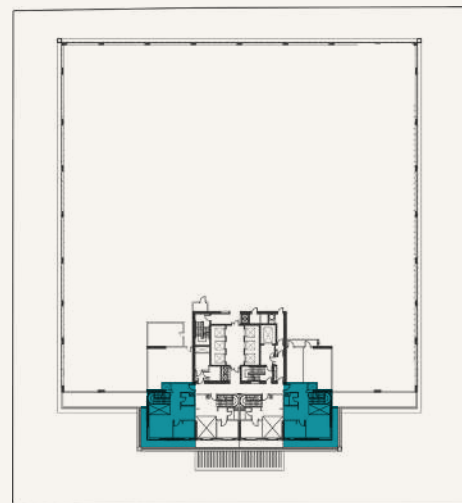


3 BEDROOM

TYPE 3C

LEVEL P1, P3

UNIT 01, 04



UNIT AREA

INTERNAL AREA	154 SQ.M.	1,668 SQ.FT.
EXTERNAL AREA	25 SQ.M.	277 SQ.FT.
TOTAL AREA	180 SQ.M.	1,945 SQ.FT.



LOWER LEVEL



UPPER LEVEL

Disclaimer: The unit layout, floor plans, dimensions, drawings and measurements are indicative in nature and are subject to change as the construction of the project progresses. All efforts have been made to ensure their accuracy, however these layouts are subject to change at the discretion of the developer or upon the instructions of the relevant authority and should not be relied upon as final. The actual area of the unit may vary from the area stated in the brochure and the developer reserves the right to make the revisions, alterations, modifications, additions, deletions and substitutions at its absolute discretion, without any liability whatsoever.

WhatsApp +971 585303840 / Telefon +49 156 78561251

www.immobilie-dubai.de

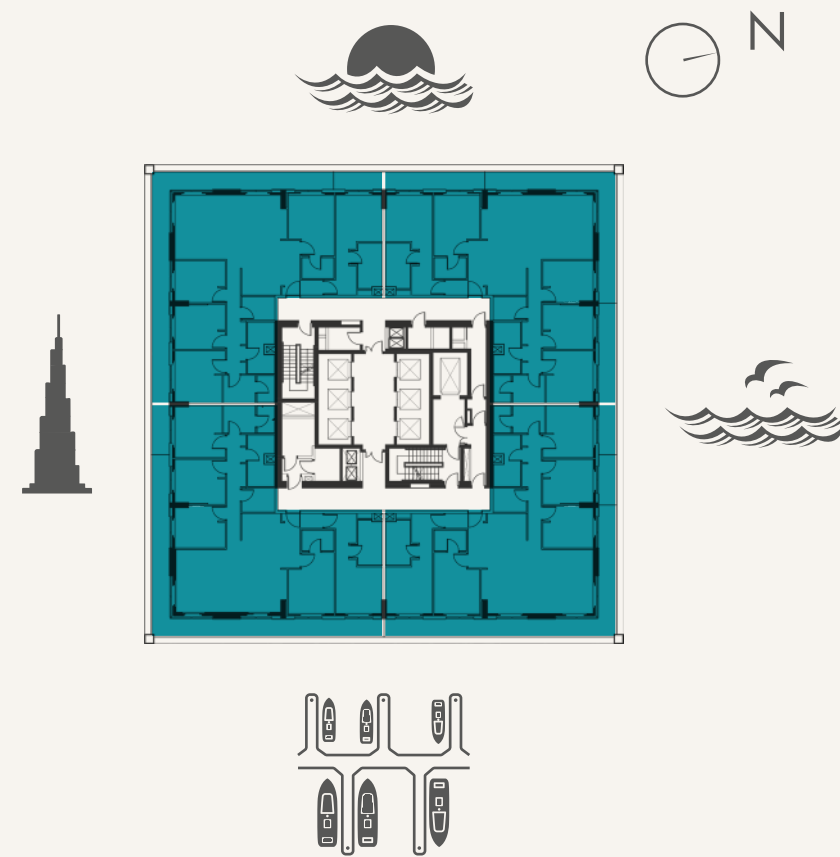


4 BEDROOM

TYPE 4A

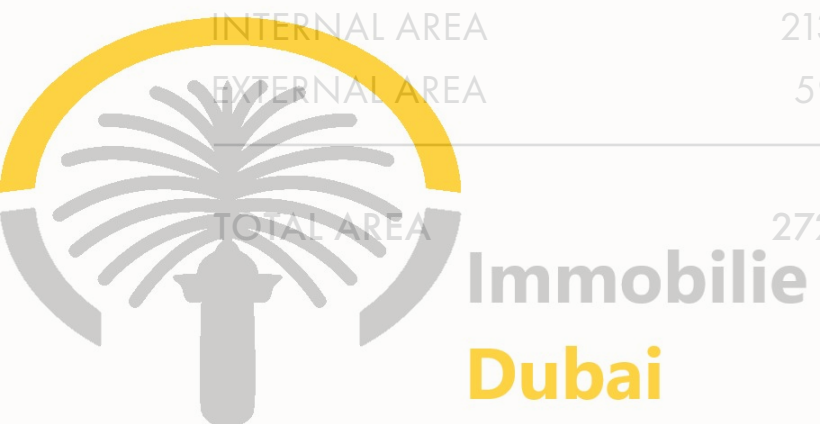
LEVEL 37

UNIT 01, 02, 03, 04



UNIT AREA

INTERNAL AREA	213 SQ.M.	2,298 SQ.FT.
EXTERNAL AREA	59 SQ.M.	637 SQ.FT.
TOTAL AREA	272 SQ.M.	2,935 SQ.FT.



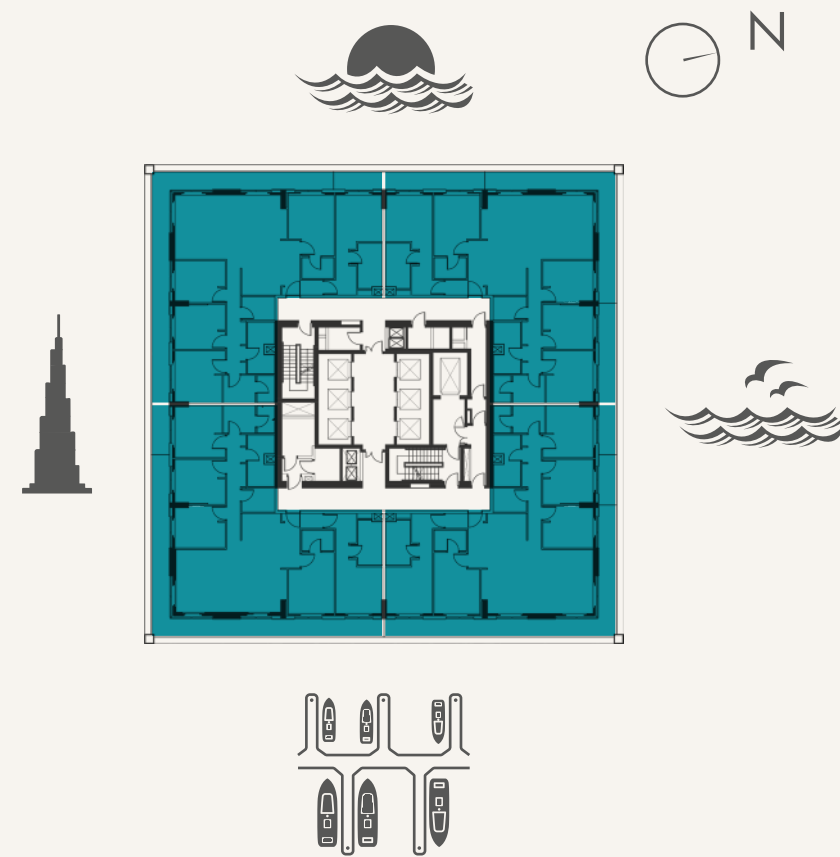


4 BEDROOM

TYPE 4B

LEVEL 38

UNIT 01, 02, 03, 04



UNIT AREA



INTERNAL AREA	224 SQ.M.	2,418 SQ.FT.
EXTERNAL AREA	203 SQ.M.	2,194 SQ.FT.
TOTAL AREA	428 SQ.M.	4,612 SQ.FT.

